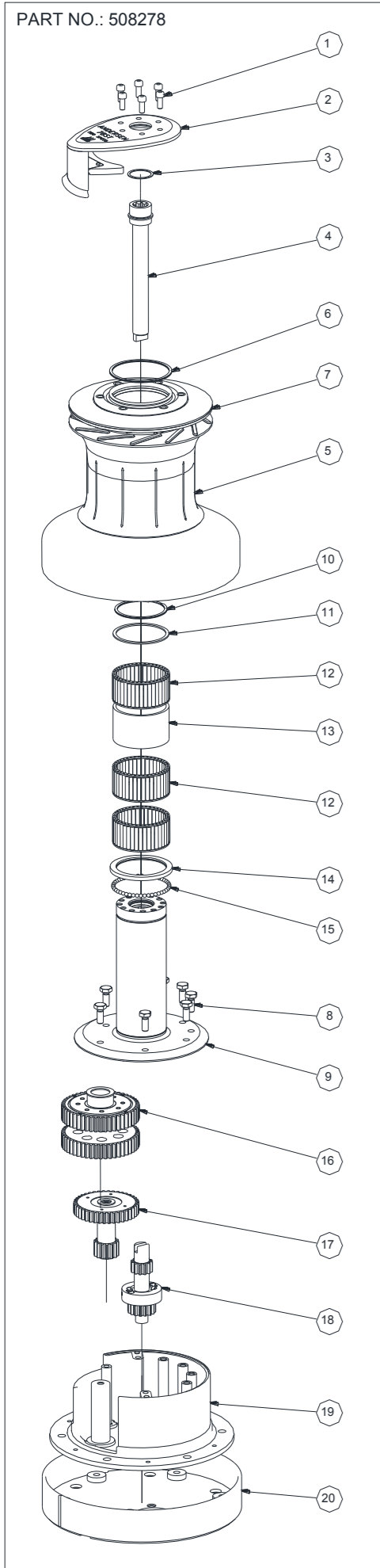
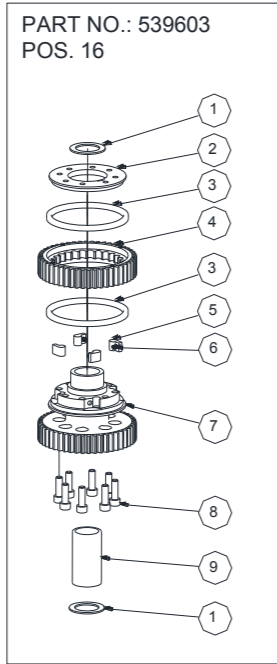


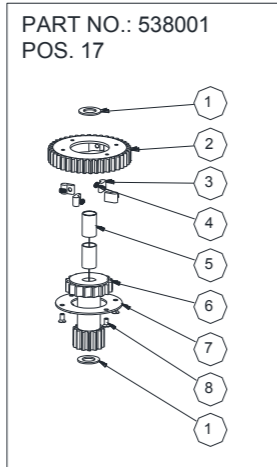
**EXPLODED VIEW  
78ST FS**  
Version 1.3.F



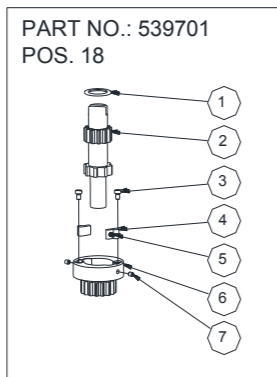
PART NO.: 508278



PART NO.: 539603  
POS. 16



PART NO.: 538001  
POS. 17



PART NO.: 539701  
POS. 18

**PARTS LIST  
78ST FS**  
Version 1.3.F

POS	QTY.	DESCRIPTION
1	6	SCREW M8x20
2	1	SELFTAILING ARM
3	1	DISC
4	1	DRIVE SHAFT
5	1	DRUM
6	1	CIRCLIP
7	1	SELFTAILING TOP
8	8	SCREW M10x25
9	1	UPPER BASE
10	1	CIRCLIP
11	1	TOP DISC
12	3	ROLLER BEARING
13	1	SPACER
14	1	BEARING
15	46	BALLS
16	1	RATCHET GEAR
17	1	RATCHET GEAR
18	1	RATCHET GEAR
19	1	LOWER BASE
20	1	BASE COVER
	1	MANUAL

POS. 16	QTY.	DESCRIPTION
1	2	WASHER
2	1	COVER
3	2	BEARING
4	1	RATCHET GEAR
5	4	PAWL SPECIAL 10 MM
6	4	PAWL SPRING
7	1	PAWL GEAR
8	8	SCREW M8x25
9	1	BUSHING

POS. 17	QTY.	DESCRIPTION
1	2	DISC
2	1	PAWL GEAR
3	4	PAWL
4	4	PAWL SPRING
5	2	BUSHING
6	1	RATCHET GEAR
7	1	COVER
8	4	SCREW M5x10

POS. 18	QTY.	DESCRIPTION
1	1	WASHER
2	1	RATCHET GEAR
3	2	SCREW M5x8
4	2	PAWL
5	2	PAWL SPRING
6	1	PAWL GEAR
7	2	PIN

ART. NO. 508278
584200
733410
522703
538400
741320
590100U
545410
DIN933-A4-M10X25
741500
590400U
538300
539200
538200
539500
724902
539603
538001
539701
741600
751150
710415

PART. NO. 539603
983401
537201
534800
537701
712500
533500
542201
DIN912-A4-M8X25
532600

PART. NO. 538001
522702
537500
533400
533500
537900
538000
537800
DIN963-A4-M5X10

PART. NO. 539701
539900
538500
DIN85-A4-M5X8
533400
533500
539700
592000

**MOUNTING INSTRUCTION  
78ST FS**  
Version 1.3.F

Installing the winch is easy, if you follow these instructions. The numbers in ( ) refer to the position numbers in the parts list.

Tools required for the installation:

- Allen key (6 mm.).
- Allen key (10 mm.).
- Drill Ø12,5mm.
- 6 pcs. M12 Hexagon socket head bolts and corresponding nuts (length depending on deck thickness).
- 6 x large washers or backing plate.
- Ring spanner to match nuts.
- Bedding compound

1. Remove screws (1).
2. Remove self-tailing arm (2) and drum (5).
3. Mark location of bolt holes using the template.
4. Remove complete winch. Be sure that no dust comes into contact with the winch while drilling.
5. Drill bolt holes Ø12,5 mm.
6. Apply a light coat of bedding compound, ensuring that each bolt hole is bedded. Keep drain grooves clear.
7. Fasten basecover (20) into place using 6 pcs. M12 bolts. Use large washers or a backing plate.
8. Assemble in reverse order.
9. Check that the winch is functioning correctly:  
The drum should operate smoothly, by turning the drum clockwise by hand.  
The drum must not turn when trying to turn the drum anti clockwise.  
While turning the winch handle clockwise the drum should turn slowly.  
While turning the winch handle anti clockwise the drum should turn fast.

**SERVICE INSTRUCTION  
78ST FS**  
Version 1.3.F

Tools required for service:

- Allen key (6 mm.).
- Allen key (10 mm.).
- Screwdriver (small).
- Winch handle.

1. Remove screws (1).
2. Remove self-tailing arm (2) and drum (5).
3. Remove circlip (10) and disk (11) Remove and clean roller bearings (12) and spacer (13).
4. Clean the balls (15) and the small retaining ring (14) above the balls with a small soft brush.
5. Remove screws (8).
6. Remove upper base (9).
7. Remove and dismantle the three gear units (16), (17), and (18).
8. Clean all parts in benzine. Remember to clean the inside of the drum.
9. Assemble in reverse order. During assemble, lightly grease all gear teeth, drive shaft, roller bearings, shafts, balls, pawls, springs and composite bushings. Use a small, soft brush. Pawls may be lubricated with a very thin film of ANDERSEN WINCH GREASE. It is very important that pawls can move freely.

**IMPORTANT:** When assembling the winch, check the functioning of each pawl by pushing the pawl against the spring. The pawls should move smoothly and automatically return to their normal position, where the pawls engage with the teeth. If the pawls do not function correctly, clean and lubricate the pawls and gears. Check the function of the pawls again to make sure that it works correctly. If the pawls do not work correctly replace the springs and recheck the functioning. Not proper functioning pawls may lead to unexpected release of the winch force resulting in fatal injuries to the user and others.

Service Kit No: 7 (part. no. 710007) contains spare parts for this winch.

## IMPORTANT INFORMATION

### ALL WINCHES



#### Read All Safety Notices and Product Manuals

Do not install or operate this winch before reading and fully understanding the contents of this Safety Notice Sheet and the Product Manual.



#### Stay Alert When Operating

Andersen winches are very powerful and have the potential to cause significant damage and/or serious injury if used improperly or without due caution and vigilance.



#### Operators Must Be Trained

Help prevent significant damage and/or serious injury by ensuring any person operating a winch has a thorough understanding of its proper operation and is aware of the potential hazards involved. As a minimum, all winch operators must read and understand this Safety Notice Sheet and the Product Manual.

Particular attention is drawn to the following points:

- Children and others not qualified to operate an electric winch must be kept at a safe distance from the winch and any rigging or fittings that are under load.
- Long hair and/or loose clothing must be tied back to avoid being caught in the winch.
- In the event of a rope override or other fault, stop the winch and turn off power before attempting to resolve the problem.



#### Avoid Accidental Operation

Remove winch handles and turn off power to the winch when not in use to help avoid unsupervised or unintentional operation. Failure to do so could result in significant damage and/or serious injury.



#### Maintenance

Turn off power to the winch before performing any maintenance or service tasks. Failure to do so could result in significant damage and/or serious injury.



#### Lifting Operations

The winch must not be operated with the rope in the self tailer when used in any kind of lifting operation.

Any lifting operations should be conducted by two persons in order to maintain constant visual contact with the object being lifted.

Furthermore the selftailer must not be used as a cleat for a rope used to lift or suspend any object. The rope must be secured properly by tying off, or leading to a suitable fitting such as a cleat or bollard.

Failure to observe these precautions could result in serious injury or death.

**DO NOT DISCARD**

## WARRANTY

Warranty – refer to our website [www.ronstan.com/warranty](http://www.ronstan.com/warranty) for our warranty terms and conditions.

# Manual

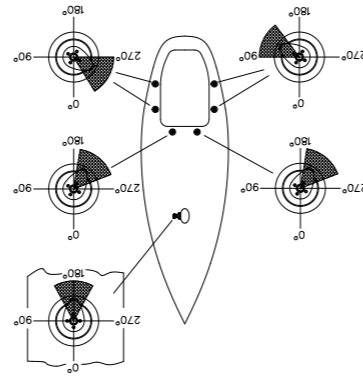
## 78ST FS

Version 1.3.F

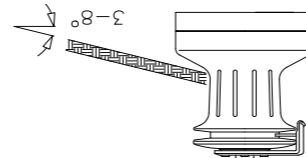


**ANDERSEN**  
STAINLESS STEEL WINCHES

13. februar 2012 — Part no.: 710415



Be also aware that selftailing arm is positioned correctly. We recommend to have the selftailing arm positioned within the shaded area. On 12ST and 28ST the position of the selftailing arm is fixed, making it very important to establish the proper location of the holes prior to drilling these in the deck. On all other models, the selftailing arm can be placed in several different positions after having installed the winch.



To ensure the best possible functioning of the winch, we recommend that the winch is placed in accordance with the line entry shown below.

Due to the best choice of materials and high precision in manufacturing, we recommend, for normal use, only to dismantle, clean and lubricate the winch once every second year. Under extensive use, such as racing, charter or blue water sailing, we recommend to lubricate the winch once every year. We strongly recommend always to use ANDERSEN WINCH GREASE, when lubricating your winch. ANDERSEN WINCH GREASE is a high quality silicone/Teflon grease product. Most other types of grease, including "marine grease" are not suitable for lubrication of winches. Non-suitable grease products can cause malfunction, which could result in fatal injuries for the user and others. Pawl arm springs should be replaced every second year. Spare arm springs and other parts that may be required are included in the ANDERSEN Service Kit. Please refer to the service instruction for the Service Kit suitable for the specific winch. When the winch handle is not in use but the winch is under load, we recommend, from a safety point of view, to remove the winch handle from the winch. To ensure correct function of the selftailing unit, only use recommended line sizes. When using the winch with mooring lines DO NOT use the selftailing function and be sure that the mooring line is not in contact with the selftailing arm.

## GENERAL INFORMATION

Manufactured by: Ronstan Denmark Aps - Jægervej 36 - 7100 Vejle - Denmark  
[info@andersenwinches.com](mailto:info@andersenwinches.com) - [www.andersenwinches.com](http://www.andersenwinches.com)



**WORLD WIDE DISTRIBUTION & SERVICE**  
 VISIT [WWW.ANDERSENWINCHES.COM](http://WWW.ANDERSENWINCHES.COM)