

# Manual CAPSTAN C500 E

1 SPEED

12+24V

**GENEREL INFORMATION**

**MOUNTING INSTRUCTION**

**EXPLODED VIEW**

**PARTS LIST**

**CONNECTING DIAGRAM**

**WIRE DIMENSION AND FUSE SIZE, LINESPEED**

**WORLD WIDE DISTRIBUTION LIST**



SERIAL NO: PS \_\_\_\_\_

Part no.: 710481  
15-03-2011

# CONGRATULATIONS

You have purchased an ANDERSEN high quality winch. This product is a result of many years of development and experience in producing winches for sailboats. This winch gives you a high degree of functionality and many years of safe and easy sail handling.

## GENERAL INFORMATION

PLEASE READ THIS BEFORE INSTALLING YOUR **ANDERSEN ELECTRIC WINCH**.

**The electric ANDERSEN winch has some built-in advantages:**

- Easy to fit on your boat.
- Template included.
- Special tools included.
- Electric unit in turn able in 8 horizon table steps (45°).
- Easy to dismantle. Winch and electric unit can be dismantled separately.
- Winch in the usual high **ANDERSEN** quality, featuring drum, bearings etc. of stainless steel.
- MODULAR POWER SYSTEM: Always the possibility of changing to a hydraulic drive unit.
- 

### **Mounting installation:**

Follow mounting instructions on next page:

Ensure that each hole in the deck is bedded, including the big hole in the center.

**IMPORTANT:** Be careful not to put bedding compound IN the thread holes in the deck plate.

Ensure that the sealing ring (O-ring) on top of the gear unit is placed in its groove.

### **Electric Installation:**

Follow mounting instructions on next page and Wire dimensions & fuse sizes on last page.

**WARNING:** Do not use smaller wire, than recommended in the diagram. This can cause malfunction of the winch and in worst case; FIRE. The wire should always be as short as possible.

### **Normal Use:**

The electric motor has built-in overload circuit breaker, which breaks the circuit, before the motor gets too hot.

After a short period of cooling, depending on temperature under deck, ventilation etc., the winch will be ready for electrical operation again.

### **General Service Instructions:**

The electric drive unit is lubricated sealed and requires no further maintenance.

The part *on* deck is a capstan winch, and needs regular service. We recommend dismantling, cleaning and lubrication *once* a year. Under extensive use, such as charter or blue water sailing, we recommend to make a further lubrication check during the one year period.

We strongly recommend always to use ANDERSEN WINCH GREASE when lubricating your winch.

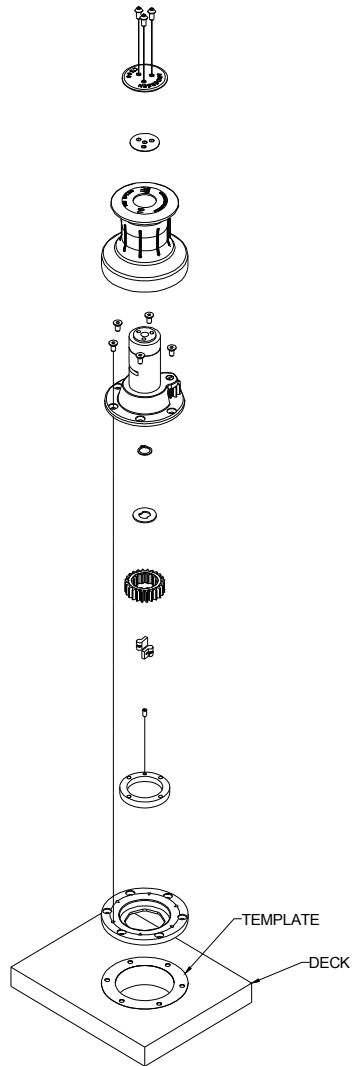
ANDERSEN WINCH GREASE is a high quality silicon/Teflon® grease.

# MOUNTING INSTRUCTION

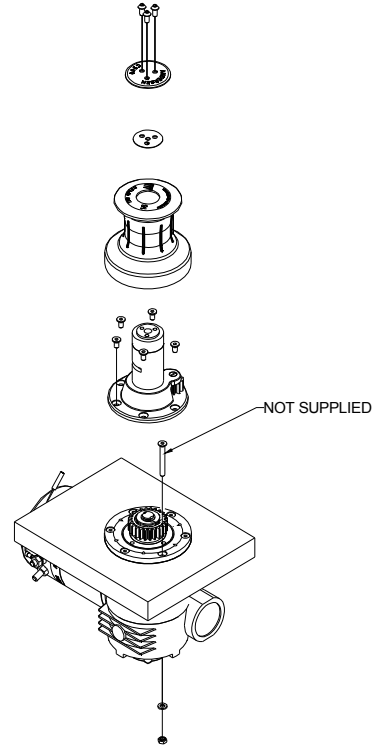
CAPSTAN C500 E

1 SPEED

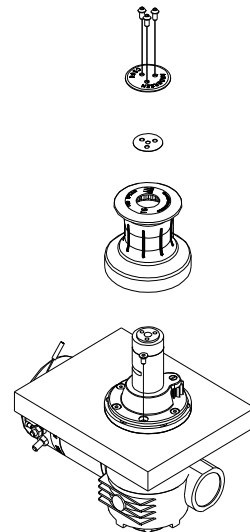
**FIG.1**



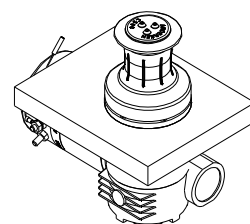
**FIG.2**



**FIG.3**



**FIG.4**



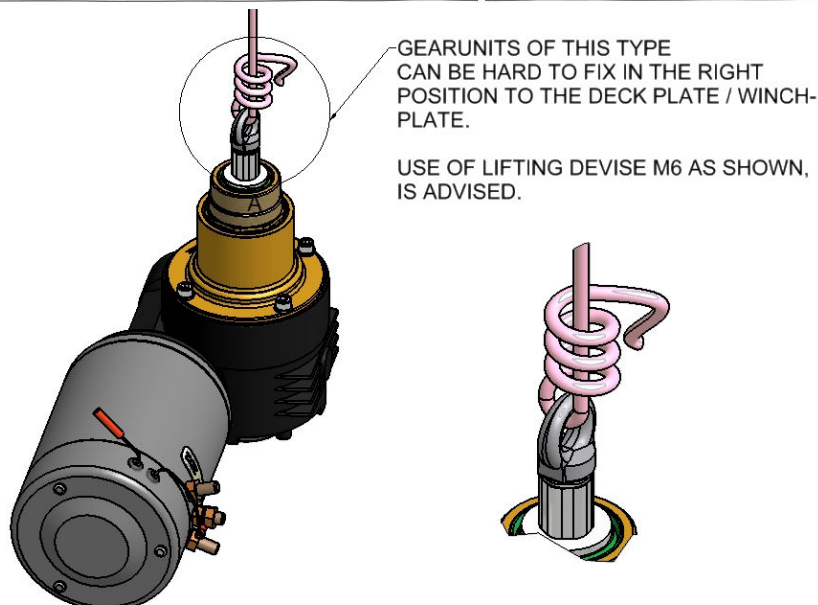
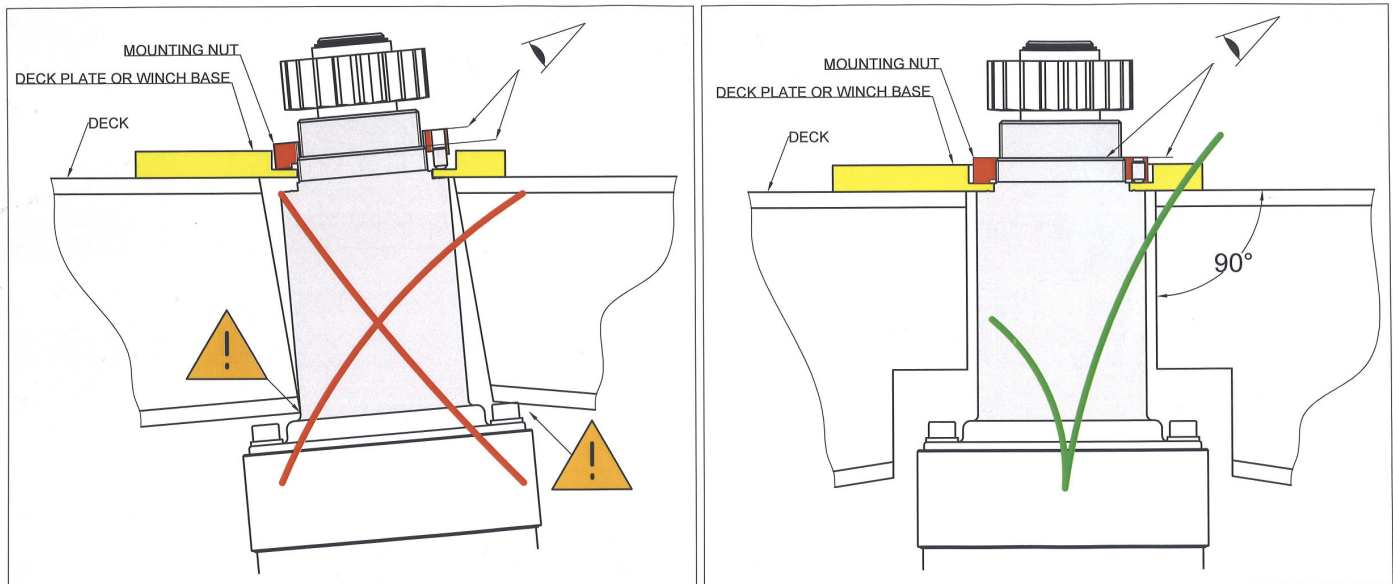
# IMPORTANT INSTALLATION INFORMATION!

It is extremely important that your motor is aligned with your winch. Non-aligned motors will be noisy and gear wear will be accelerated.

To insure that your motor is aligned properly the motor flange must be flush with the deck plate and the eight-sided nut must fit snugly into the octagon in the deck plate.

This can be achieved with the help of the following:

- Drill the hole through the deck wider than the motor flange. When mounted there must be free space between the deck and the flange.
- Clean the deck hole before attempting to install the motor so that the motor flange does not catch splinters of fiberglass or wood when being inserted through the deck.
- Insure that the underside of the deck plate is clean and free from resin, varnish or sealants.
- Do not use a sealant between the flange and deck plate. An o-ring insures a waterproof connection. Extra waterproofing can be achieved by applying sealant to the top of the deck plate next to the mounting nut after installation.
- Insure that the locking screw on the mounting nut is not protruding beyond the contact surface before tightening the mounting nut. Tighten the locking screw when the mounting nut is securely in place.



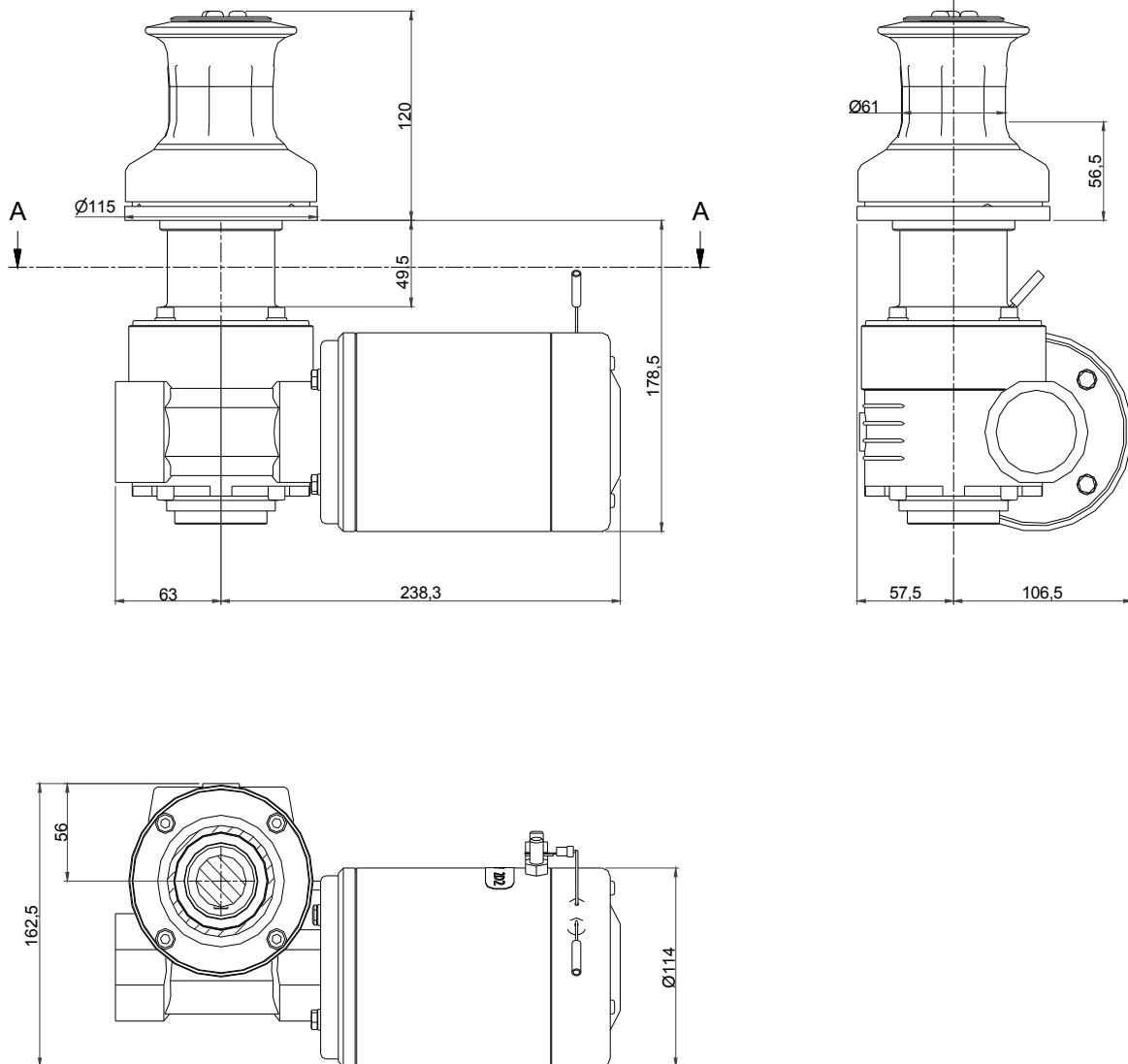
Part no.: 710481  
15-03-2011

# INSTALLATION DIMENSIONS

CAPSTAN C500 E

1 SPEED

**Non-dimensional accuracy!!!**



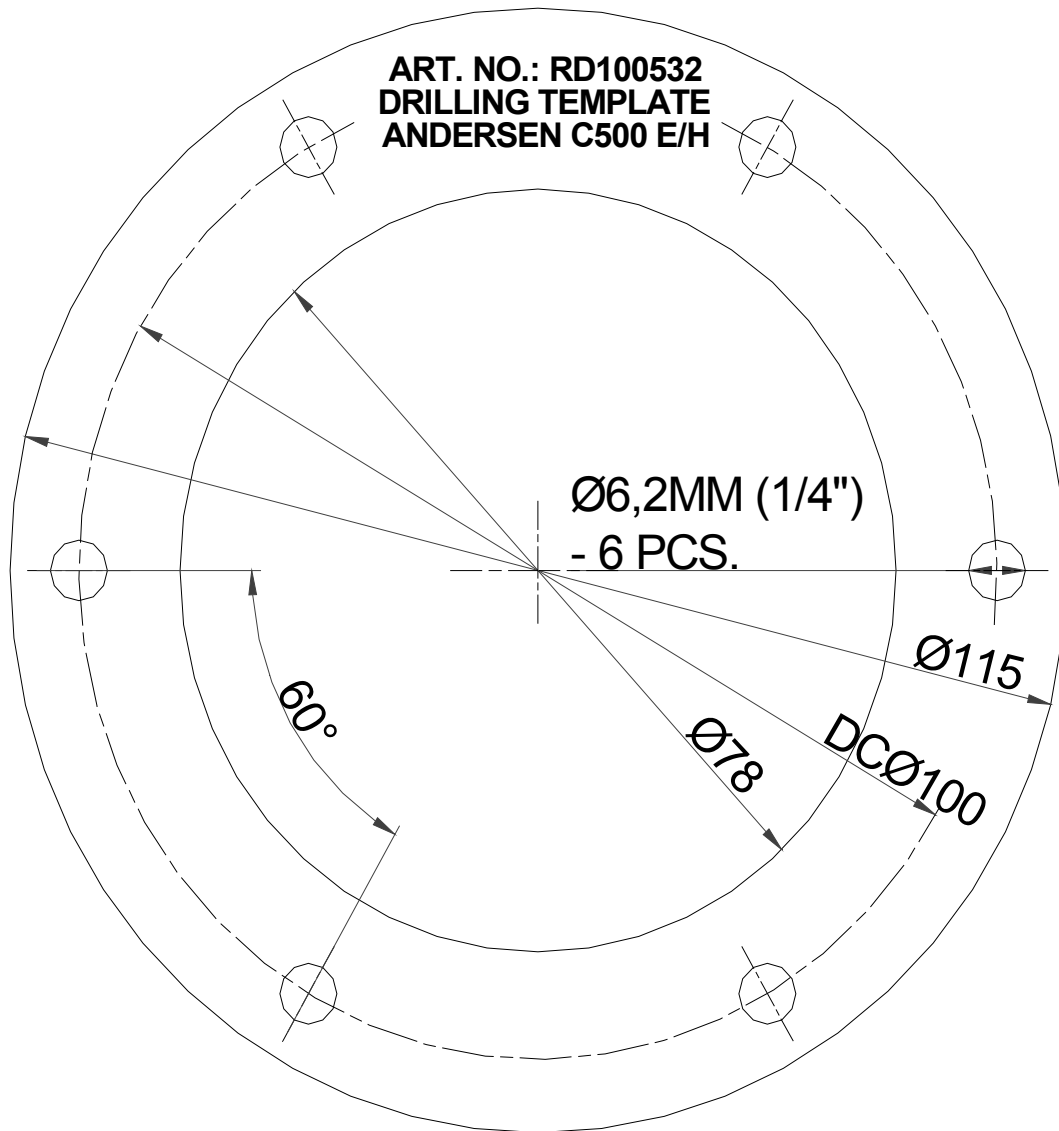
Part no.: 710481  
15-03-2011

# DRILLING TEMPLATE

CAPSTAN C500 E

1 SPEED

**Non-dimensional accuracy!!!**

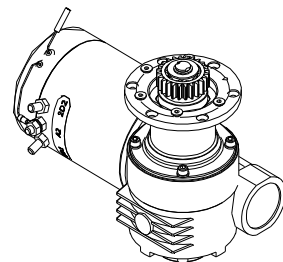
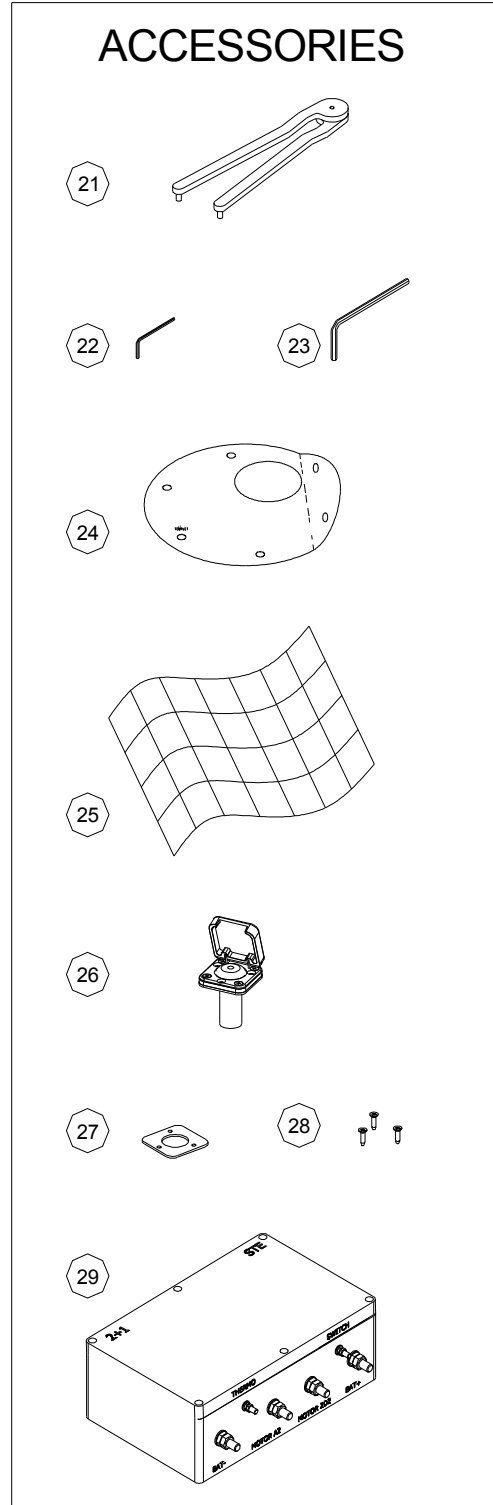
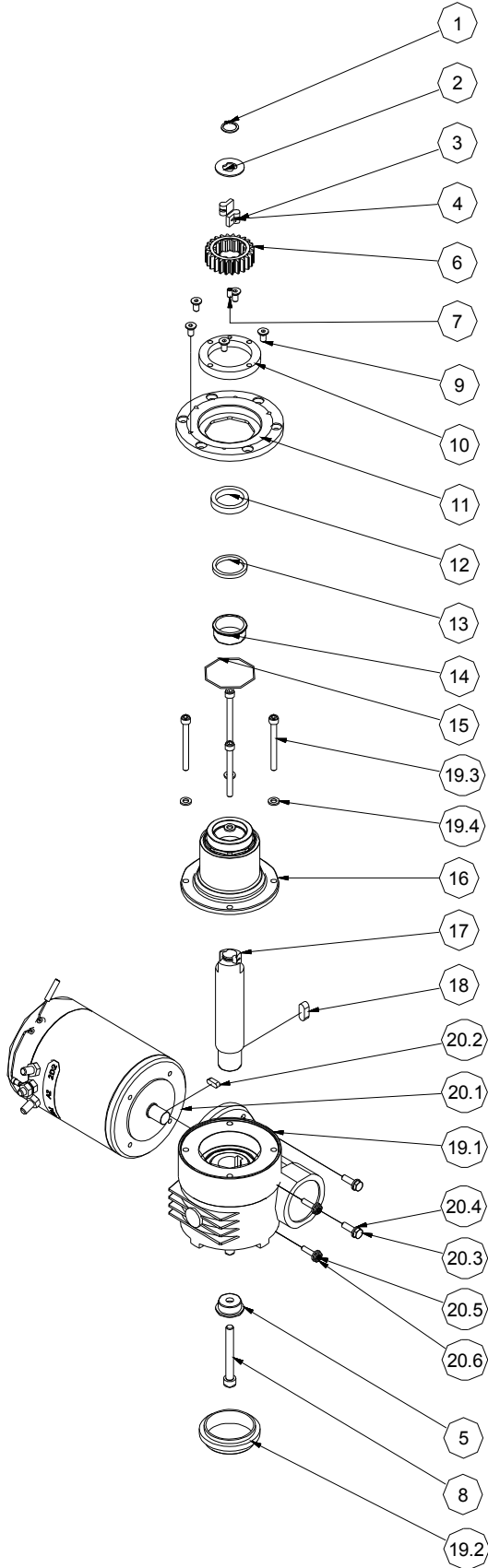


Part no.: 710481  
15-03-2011

# EXPLODED VIEW

CAPSTAN C500 E

1 SPEED



Part no.: 710481  
15-03-2011

# PARTS LIST

## CAPSTAN C500 E

### 1 SPEED

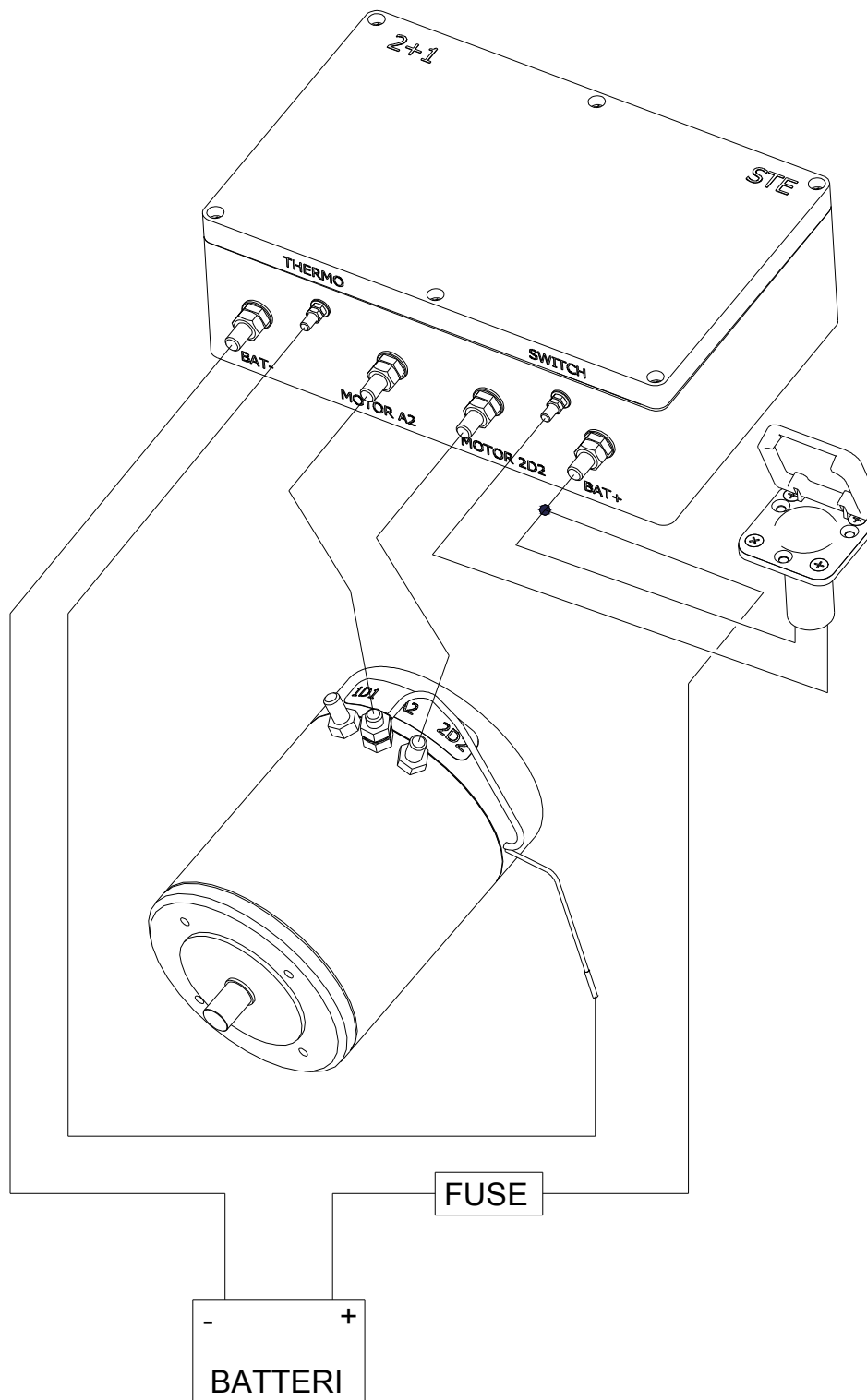
POS	QTY	ART. NO.	DESCRIPTION
1	1	DIN471-A2-A15	Circlip
2	1	773310	Disc
3	2	713200	Pawl
4	2	713300	Arm Spring
5	1	772600	Washer
6	1	711701	Gear wheel
7	1	DIN916-A4-M5x10	Locking Screw
8	1	DIN912-A4-M8x65	Screw
9	5	DIN7991-A4-M6x12	Screw
10	1	584502	Mounting Nut
11	1	772800	Deckplate
12	1	773800	Bushing
13	1	RD100169	Sealing Ring
14	1	823100	Bushing
15	1	RD100074	O-Ring
16	1	776100	Drive shaft housing
17	1	773300	Drive shaft
18	1	DIN6885-A8x7x20	Key
19	1	776320	Gear Unit
19.1	1	775880	Gear Flange
19.2	1	RD100783	Cover
19.3	4	DIN912-A4-M6x55	Screw
19.4	4	DIN125-A4-Ø6	Washer
20	1	777305	Motor 1000W 12V 3-POL
20	1	777315	Motor 1000W 24V 3-POL
20.1	1	RD100966	CIMA1000W 12V 3-POL
20.1	1	RD100967	CIMA1000W 24V 3-POL
20.2	1	DIN6885-A-5x5x15	Key
20.3	2	DIN933-A4-M6x20	Screw
20.4	4	DIN125-A4-Ø6	Washer
20.5	2	DIN 916-A4-M6x25	Screw
20.6	2	DIN439-A4-M6	Nut
21	1	RD738000	Pin Spanner
22	1	593000	Allen key
23	1	592900	Allen key
24	1	RD100532	Template C500 E/H
25	1	RD100029	Switch labels
26	1	RD581900	Switch
27	1	735050	Sealing
28	3	RD100025	Screw
29	1	990212	Controlbox 12V Capstan C500
29	1	990224	Controlbox 24V Capstan C500
		710481	Manual

Part no.: 710481  
15-03-2011



# CONNECTING DIAGRAM

**12+24V**  
**CAPSTAN C500 E**  
**1 SPEED**



**IMPORTANT:** Do not use connection 1D1

**REMARK:** Fuse must be of a slow blow type

Part no.: 710481  
15-03-2011

# MINIMUM WIRE DIMENSIONS & FUSE SIZES

(Not for continuous service)

WINCH	WIRE LENGTH*	12V. DC			24V. DC		
		WIRE	FUSE	BAT. CAP.	WIRE	FUSE	BAT. CAP.
C500 E	0-3 m / 0-10 ft	70 mm <sup>2</sup>	200 A	360 Ah	35mm <sup>2</sup>	125 A	240Ah
	3-8 m / 10-27 ft	95 mm <sup>2</sup>	224 A	360 Ah	50mm <sup>2</sup>	200 A	240Ah

\* WIRE LENGTH is defined as the distance from battery to switch box + the distance from switch box to motor.

IMPORTANT: Fuse must be of a slow blow type.

# ELECTRIC SPECIFICATIONS

## 12+24V

CAPSTAN C500 E

1 SPEED

Weight	Weight Winch Kg	Weight Unit	Max. Pull kg.
Total Kg		Kg	
14,2	2,3	11,9	500

## 12V

Motor Watt 12V	Line Speed 0 kg. meter/minute	Line Speed 50% load meter/minute	Line Speed Max. Load meter/minute	Amp. use 50% load	Amp. use Max. Load
1000W	11	8,5	4,5	145	160

## 24V

Motor Watt 24V	Line Speed 0 kg. meter/minute	Line Speed 50% load meter/minute	Line Speed Max. Load meter/minute	Amp. use 50% load	Amp. use Max. Load
1000W	15	7,3	5,5	60	75

# Worldwide Distribution

For current World Wide Distributor list please see:  
[www.andersenwinches.com](http://www.andersenwinches.com)