

**MANUAL FOR**  
**ANDERSEN 6000STH 2+2**



*Sail Handling by*  
 **ANDERSEN**  
Stainless Steel Winches

**SERIAL NO.: PS0017452, PS0017448**



## **CONGRATULATIONS**

You have purchased an ANDERSEN high quality winch. This product is a result of many years of development and experience in producing winches for sailboats. This winch gives you a high degree of functionality and many years of safe and easy sail handling.

# CONTENTS

CONGRATULATIONS.....	3
CONTENTS .....	4
GENERAL INFORMATION.....	5
FEATURES AND ADVANTAGES.....	7
SAFETY .....	7
MOUNTING INFORMATION .....	8
ELECTRIC INSTALLATION.....	9
ELECTRIC CONNECTION SCHEME.....	10
HYDRAULIC DIAGRAM 2+2 .....	12
EXPLODED VIEW FOR WINCH 6000STH 2+2 .....	14
SPARE PARTS LIST FOR WINCH 6000STH 2+2 .....	15
EXPLODED VIEW FOR DRUM 6000STH 2+2.....	16
SPARE PARTS LIST FOR DRUM 6000STH 2+2.....	17
EXPLODED VIEW FOR MANUEL GEAR 6000STH 2+2 .....	18
SPARE PARTS LIST FOR MANUEL GEAR 6000STH 2+2 .....	19
EXPLODED VIEW FOR MANUEL GEAR 6000STH 2+2 .....	20
EXPLODED VIEW FOR MANUEL GEAR 6000STH 2+2 .....	21
EXPLODED VIEW FOR MANUEL GEAR 6000STH 2+2 .....	22
EXPLODED VIEW FOR MANUEL GEAR 6000STH 2+2 .....	23
EXPLODED VIEW FOR MANUEL GEAR 6000STH 2+2 .....	24
EXPLODED VIEW FOR MANUEL GEAR 6000STH 2+2 .....	25
EXPLODED VIEW FOR HYDRAULIC GEAR 6000STH 2+2.....	26
SPARE PARTS LIST FOR HYDRAULIC GEAR 6000STH 2+2.....	27
VIEW FOR HYDRAULIC COMPONENTS 2+2.....	28
LIMITED WARRANTY .....	29
WORLDWIDE DISTRIBUTION.....	30

# GENERAL INFORMATION

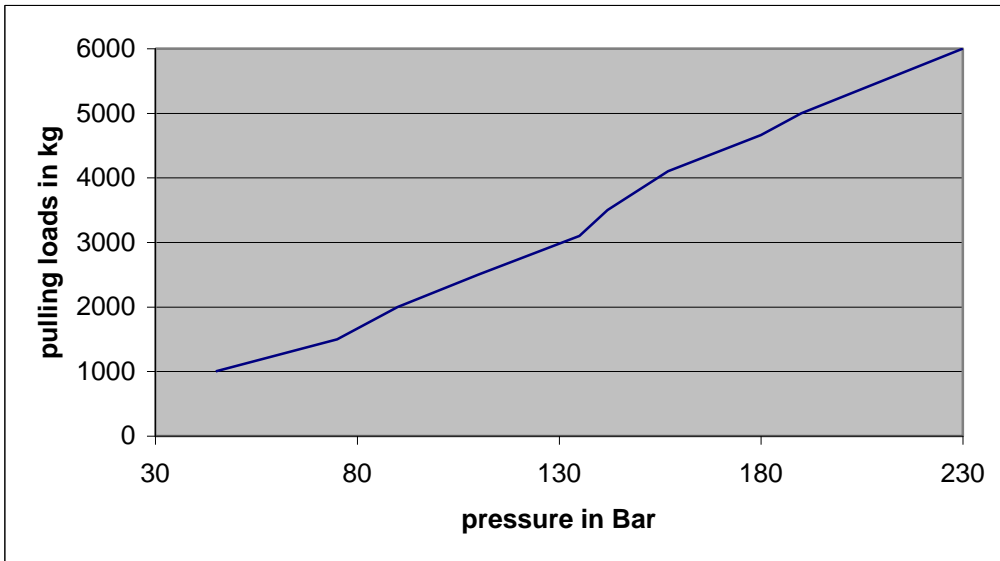
**Please read following before installing your new ANDERSEN hydraulic winch.**  
 The Aen 6000 winch combine high performance with a high rate and efficiency

## Winch performance-hydraulic gear:

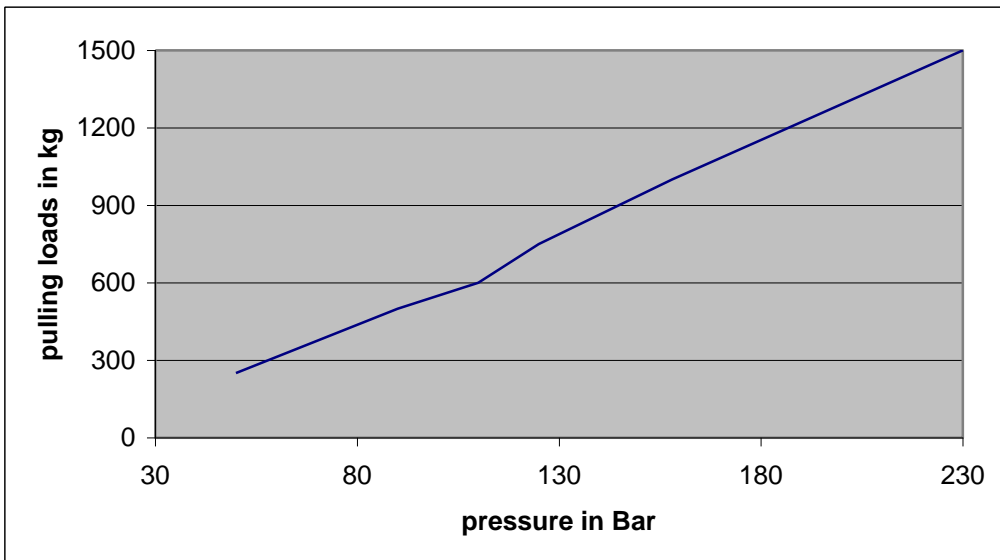
		Slow Gear													
Pull (kg)	500	750	1000	1500	2000	2500	3000	3500	4000	4500	5000	6000	7000	8000	9000
Bar			45	75	90	110	135	142	153	176	180	220			

		Fast Gear													
Pull (kg)	500	750	1000	1500	2000	2500	3000	3500	4000	4500	5000	6000	7000	8000	9000
Bar	90	125	158	230											

**Hydraulic slow gear**



**Hydraulic fast gear**



## GENERAL INFORMATION

### HYDRAULIC FLOW

Unloaded the winch require following:

6000STH:

MAX speed: 1 Meter / min. requires 1,1 Litre / min. (Flow= Req. line speed x 1,1)

MIN speed: 1Meter / min. requires 3,6 Litre / min. (Flow= Req. line speed x3,6)

Max line speed recommended is 25 m / min

### PRESSURE

Max working pressure is 240bar

### WEIGHTS

6000STH-2+2:            App 130 kg

## FEATURES AND ADVANTAGES

### **Materials:**

The ANDERSEN Mega Yacht Winches is fabricated in Stainless steel and Aluminium bronze. External surfaces are made of highly polished AISI 316.

### **Gearbox:**

The Built-in Hydraulic gearbox is running in an oil-bath to reduce maintenance to the minimum. The gearbox is designed as an epicyclical gearbox in tough hardened steel. The gearbox contains 0.5 Litre of ©Castrol Syntax universal 75W/90 gearoil

### **Self Tailing:**

The Stripper-arm is turn able in 8 horizontal steps. The selftailing in general is made to adjust automatically to different rope sizes, and run in both directions.

NOTICE: When using the backwind function, it's necessary to hold your lose sheet end tight, to insure the rope is kept in the selftailer.

### **Hydraulic Motors:**

The Hydraulic motor is turn able in 4 horizontal steps 90° between. The motors are Variable or two speed Motors. This gives us a great range of speed variations.

### **Backwind:**

ANDERSEN winches with backwind can rotate in both directions. The ability to reverse the winch at any time is much appreciated, both for improved control and better safety.

Backwind makes trimming easier.

NOTICE: Using the backwind function requires that the user keep the lose sheet end tight, to insure the sheet is feed the sheet into the selftailer.

## SAFETY

### **IMPORTANT:**

Be aware of the winch's power. Only competent sailors should operate the winch.

Every time the winch is to be used, be sure that persons are standing well clear of the winch and rope to be pulled. Always be aware of what the winch is pulling on as well as the rope on the winch. A rope snagged or jammed on a sail, spar or rigging can result in dangerous overloading. This is especially important when using a powerful primary winch for less demanding tasks like hoisting the mainsail where the winch is many times more powerful than necessary for the task at hand.

Let only trained personnel operate the winch and under no circumstances should children be allowed to play with the Hydraulic winch.

## MOUNTING INFORMATION

### GENERALLY:

#### **DO NOT REMOVE CONTRA VALVE ON DRAIN**

Ensure that ALL HOLES in the deck is bedded.

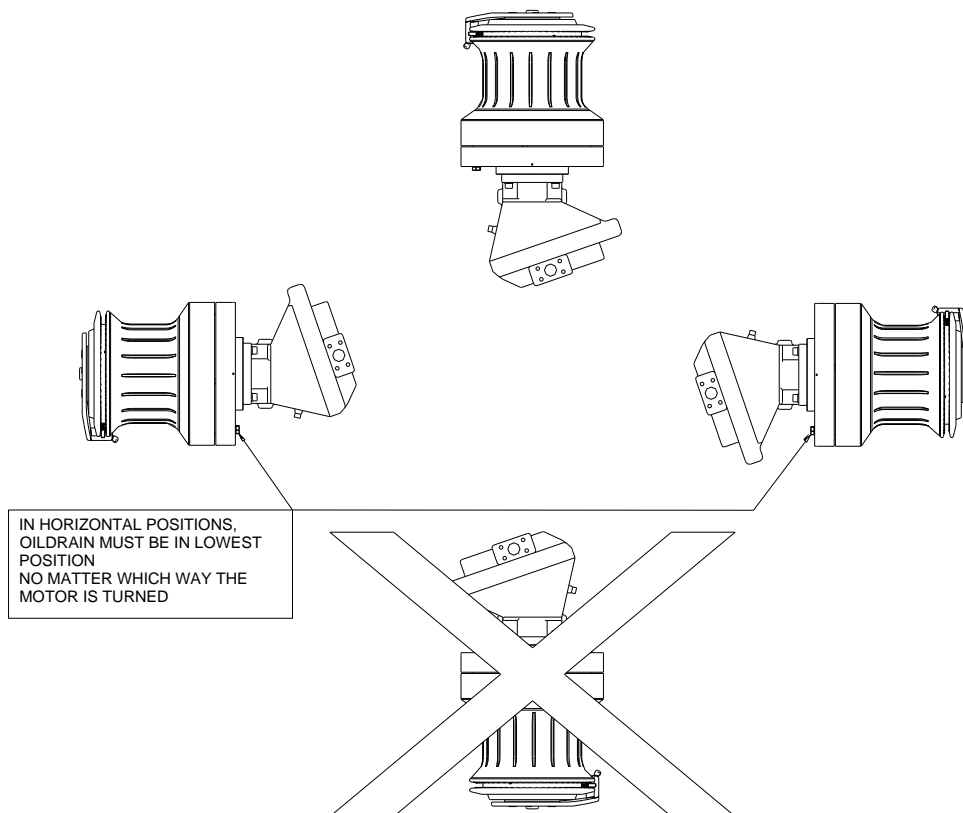
Be careful not to put bedding compound in thread holes in the base plate

Ensure that the mounting surface is absolutely straight.

To mount the winch

Cut and drill the required holes in the deck according to the template

- 1) Dismount the hydraulic motor from the winch.  
**DO NOT REMOVE CONTRAVALVE ON MOTOR DRAIN!**
- 2) The winch is mounted with 8 x M12 bolts (not included). The bolts are tightened with the head below the deck and are screwed into the thread prepared in the base plate of the winch. The bolts should be 30-35 mm longer than the thickness of the deck.
- 3) Re-mount the motor. Remember a 10 bar contra valve is to be mounted on return line (See wiring Diagram). Connect the winch hydraulic and electric.





## **ELECTRIC INSTALLATION**

24V power is used to control the 2 solenoid-valve switches, which initiate the operation of the winch. One solenoid on the power pack is used for low gear while both solenoids are activated for high gear. This is achieved with the use of a rectifier (not included) enabling both solenoids to be activated at the same time. See the wiring diagram for more details.

# ELECTRIC CONNECTION SCHEME

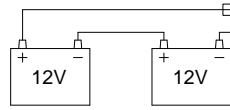
## ANDERSEN Mega Winch 2+2 - Electric scheme

Component

Electric box  
MEGA STH 2+2

Electric supply

24V battery supply



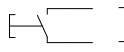
Fuse 10Amp

- + 24VDC -  
- ÷ GND -

+ input  
÷ input

Push buttons

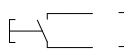
Min speed switch



- + 24VDC -  
- SIGNAL -

A  
+ power

Max speed switch



- + 24VDC -  
- SIGNAL -

A  
B

Hydraulic motor

Solenoid - motor valve (Speed control):



- PIN 1 + 24VDC -  
- PIN 2 ÷ GND -

+ motor  
÷ output

Power Pack

Solenoid Power Pack Directional valve:



- + 24VDC -  
- ÷ GND -

+ power  
÷ output

Attention

Remember to mount a Emergency stop on your system

2009-08-25, OG

## HYDRAULIC INSTALLATION

Hydraulic installations are to be done by qualified personnel.  
Hoses/pipes are recommended to a minimum. ½ inch.

Keep all surfaces clean.

The Power pack should be installed with suction filter (consult power pack manual).

The motor is SAUER-DANFOSS 51-1 bent axis motor with electro-hydraulic two position control-options.

On Port A and B there are mounted 1inch SAE flanges, and on port A there is furthermore a 10 bar non-return valve which shall insure no cavitations in the motor.

On drain L1 there is mounted a ½ bar non-return valve.

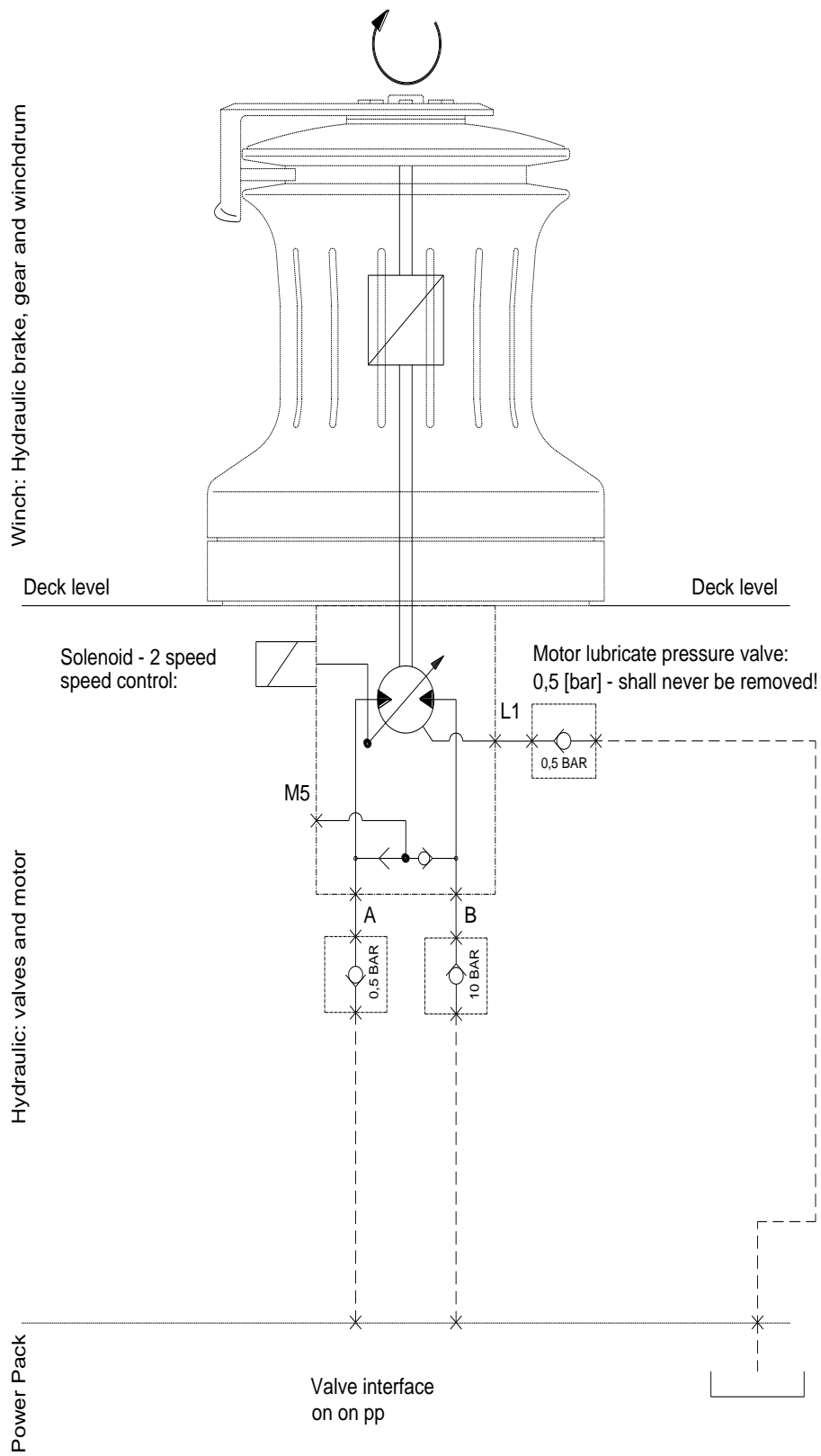
This valve should never be removed.

If it is accidentally removed the motor must be refilled with hydraulic oil to lubricate the top – bearings in the motor.

Hydraulic wiring: See Hydraulic wiring diagram

# HYDRAULIC DIAGRAM 2+2

ANDERSEN Mega Winch 2+2 - Hydraulic layout



## GENERAL SERVICE INSTRUCTIONS

The hydraulic drive unit is lubricated and sealed for life and need no further maintenance.

The winch drum and manual gear system is a standard self tailing winch which needs normal service. We recommend dismantling, cleaning and lubricating the drum bearing and the planetary gear teeth once a year. During extensive use such as racing we recommend 2 services a year.

As the manual gear is closed and lubricated, we only consider service necessary every 5 year, but during extensive manual use it can be done more often.

We strongly recommend always using Andersen Winch Grease. This grease is high quality products with characteristics ideal for winches.

Check frequently the winch from leaking as well as hoses / pipes.

**IMPORTANT:** Damaged hoses or pipes must be changed immediately

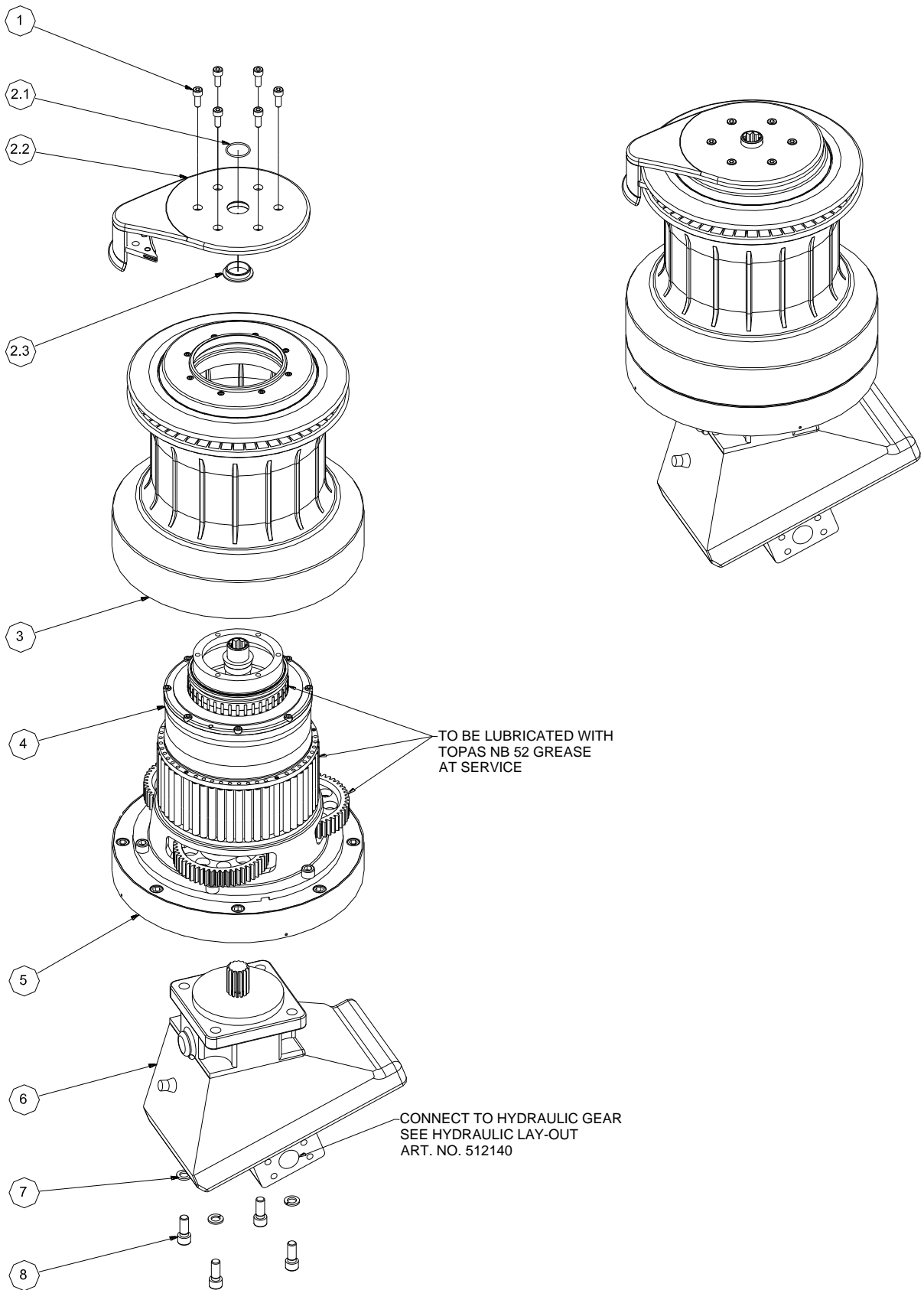
For dismantling and assembling the winch see exploded views.

Required Tools:                    1 set of metric Allen keys from 2 to 10mm.

   2 small flathead screwdrivers (pawl/spring mounting)

Circlip pliers external. (Only if disassembling the hydraulic gear system).

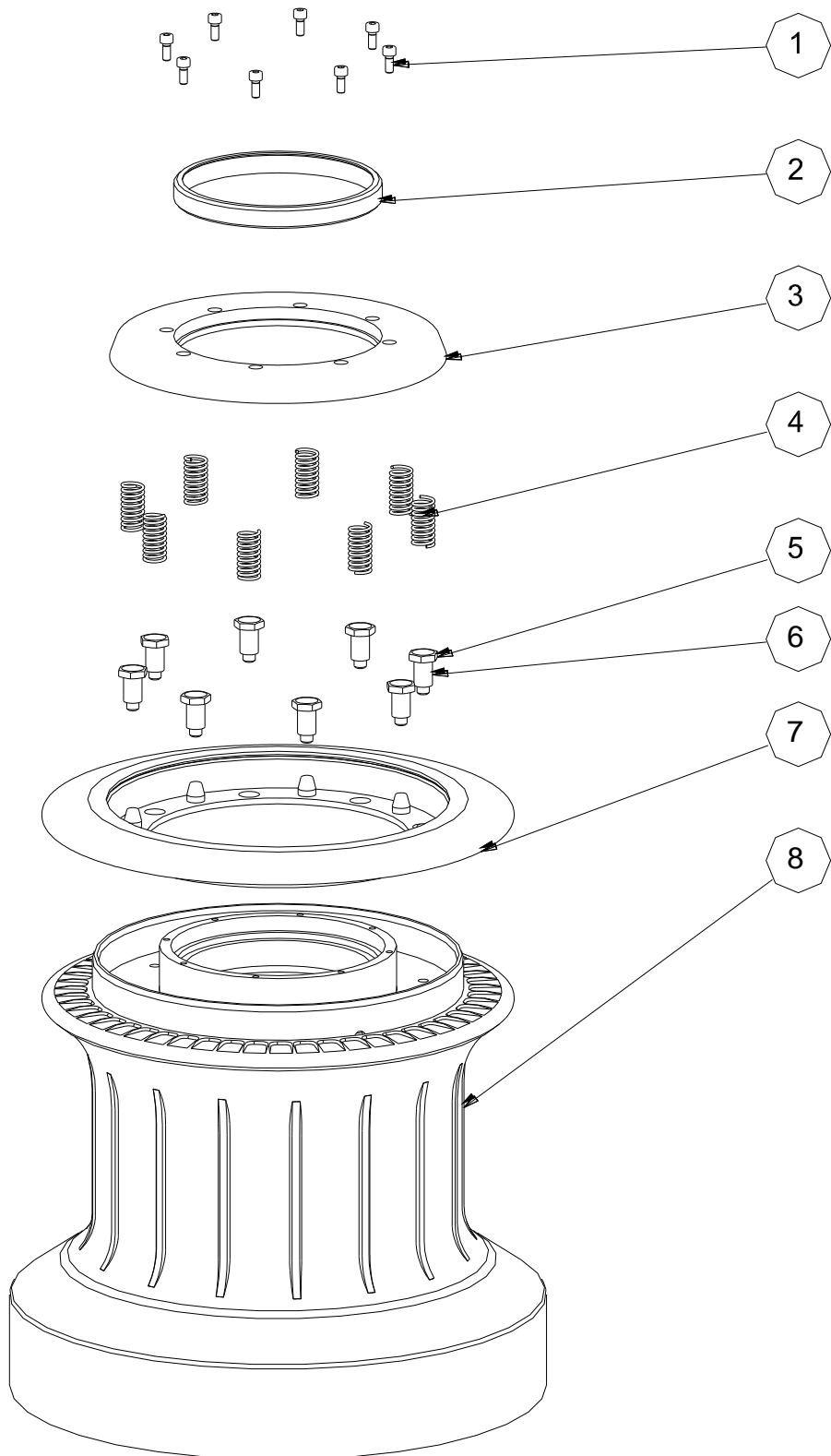
# EXPLODED VIEW FOR WINCH 6000STH 2+2 ART. NO. 511800



**SPARE PARTS LIST FOR WINCH 6000STH 2+2  
ART. NO. 511800**

<b>POS.</b>	<b>QTY.</b>	<b>DESCRIPTION</b>	<b>ART. NO.</b>
1	6	Cylinder Head Cap Screw	DIN 912-A4-M8x20
2	1	Self-tailing arm complete	511883
2.1	1	O-ring	RD100641
2.2	1	Self-tailing arm, part	511884
2.3	1	Bearing	511804
3	1	Drum complete	511890
4	1	Manual Gear Complete	511840
5	1	Hydraulic Gear Complete	511810
6	1	Hydraulic Motor	RD100461
7	4	Spring Washer	DIN128-A4-A12
8	4	Cylinder Head Cap Screw	DIN912-A4-M12x30
	1	Hydraulic components 2+2	512140
	1	El-box 24V 2+2	738627
	2	Lifting device M6	310301
	2	Lifting device M8	512119
	1	Template	RD100531
	1	Manual	

**EXPLODED VIEW FOR DRUM 6000STH 2+2**  
**ART. NO. 511890**

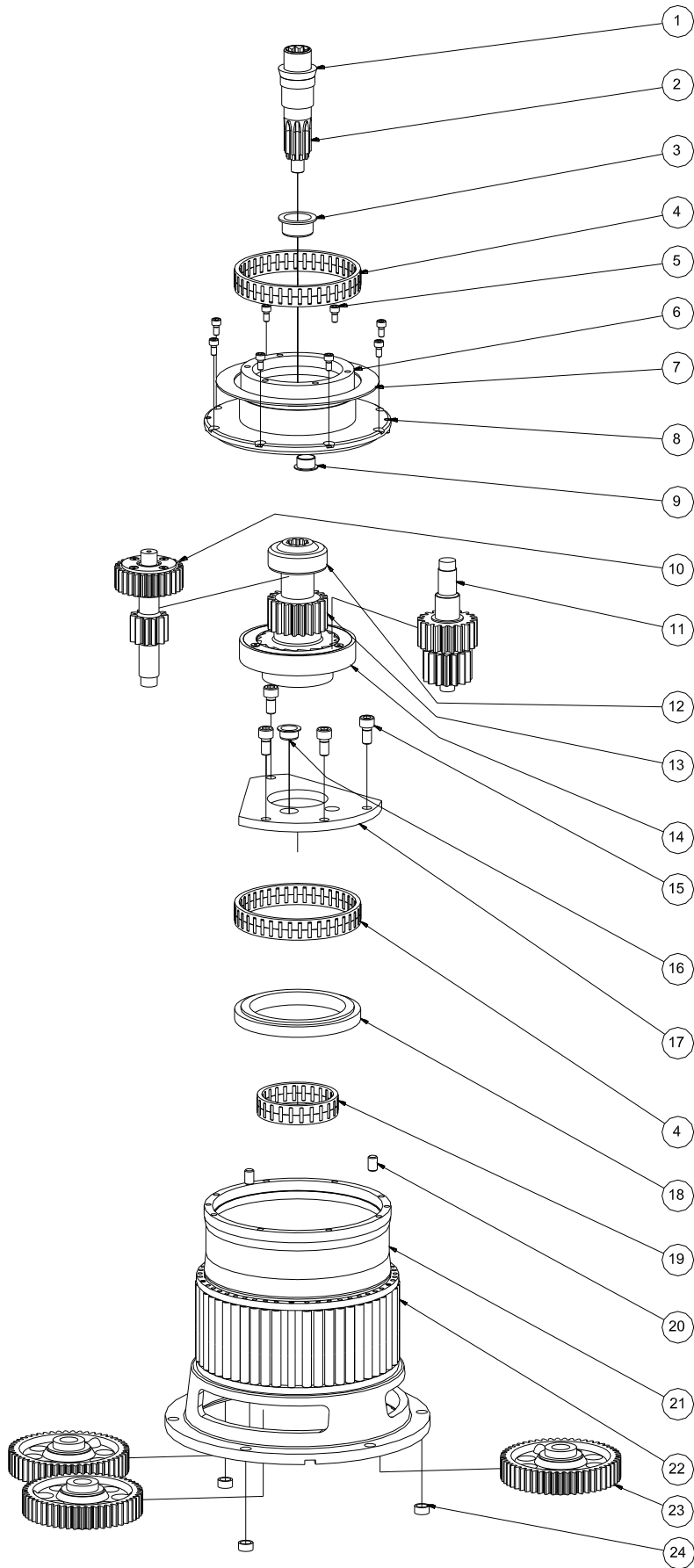




**SPARE PARTS LIST FOR DRUM 6000STH 2+2**  
**ART. NO. 511890**

<b>POS.</b>	<b>QTY.</b>	<b>DESCRIPTION</b>	<b>ART. NO.</b>
1	8	Cylinder Head Cap Screw	DIN912-A4-M5X12
2	1	Sealing Ring	511894
3	1	Top Ring	511878
4	8	Spring	RD100451
5	8	Bolt	511252
6	8	Bushing	511253
7	1	Driving Plate	511877
8	1	Drum	511860

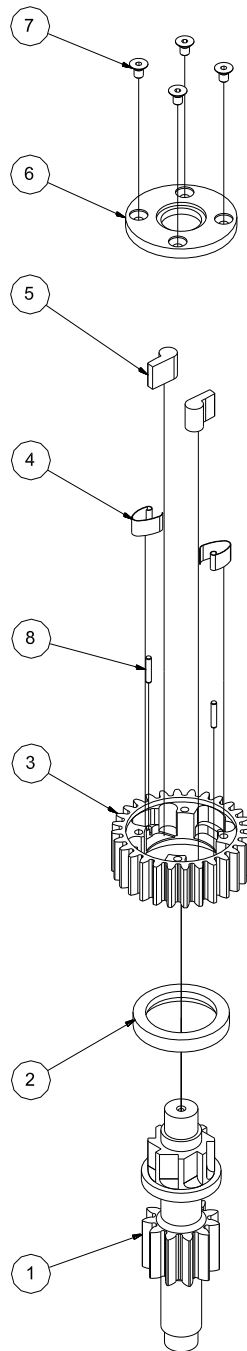
# EXPLODED VIEW FOR MANUEL GEAR 6000STH 2+2 ART. NO. 511840



**SPARE PARTS LIST FOR MANUEL GEAR 6000STH 2+2  
ART. NO. 511840**

<b>POS.</b>	<b>QTY.</b>	<b>DESCRIPTION</b>	<b>ART. NO.</b>
1	1	Bushing for Driveshaft	512004
2	1	Driveshaft	511857
3	1	Bushing	511806
4	2	Roller Bearing	588001
5	8	Cylinder Head Cap Screw	DIN912-A4-M6x12
6	1	Top plate	511850
7	1	Polymer space	512125
8	2	Pin	511809
9	1	Bushing	RD100634
10	1	Ratchet gear	511971
11	1	Intermediate gear, complete	511975
12	1	Ratchet gear, Upper	511973
13	1	Center gear, complete	511974
14	1	Ratchet gear, Lower	511972
15	4	Cylinder Head Cap Screw	DIN912-A4-M10x20
16	1	Bushing	511803
17	1	Mounting plate	511841
18	1	Polymer space	511835
19	1	Roller Bearing	525905
20	2	Pin	511807
21	1	Baseplate	511829
22	1	Roller Bearing	512150
23	3	Drive Gear complete	511976
24	3	Bushing	511837

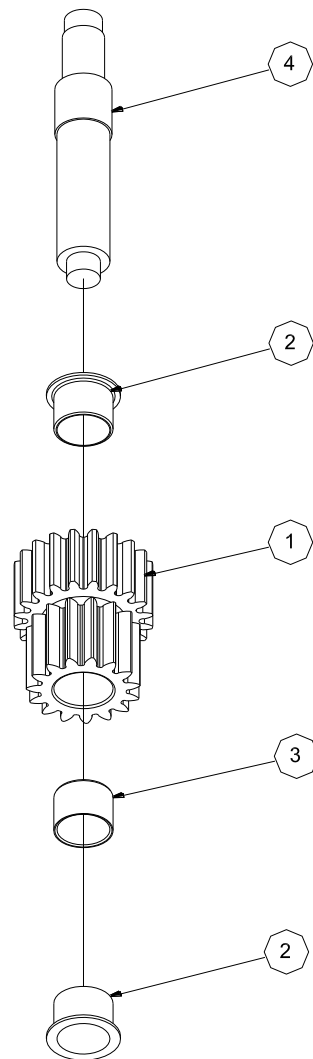
**EXPLODED VIEW FOR MANUEL GEAR 6000STH 2+2  
ART. NO. (511840 – POS. 10) 511971**



**SPARE PART LIST FOR MANUEL GEAR 6000STH 2+2  
ART. NO. (511840 – POS. 10) 511971**

POS.	QTY.	DESCRIPTION	ART. NO.
1	1	Free Wheel	511844
2	1	Bearing	511853
3	1	Free Wheel	511845
4	2	Spring	511984
5	2	Pawl	511969
6	1	Cover for Free Wheel	511852
7	4	Screw	DIN7991-A2-M5x8
8	2	Pin	DIN7-A1-3H8x16

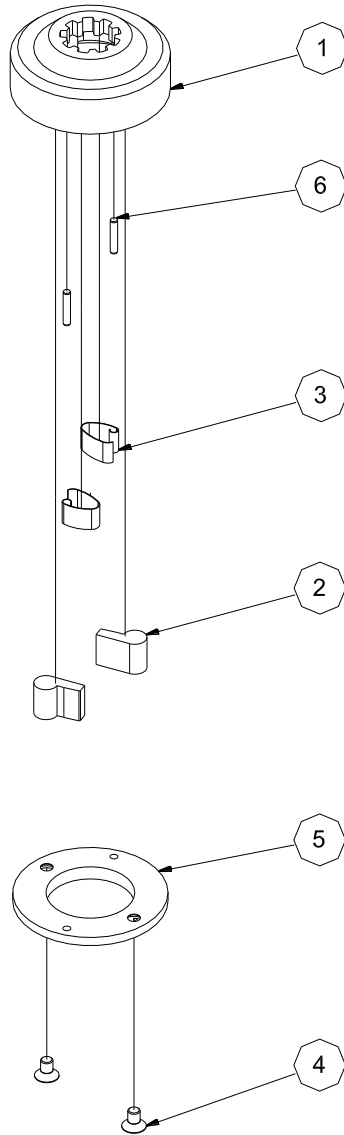
**EXPLODED VIEW FOR MANUEL GEAR 6000STH 2+2  
ART. NO. (511840 – POS. 11) 511975**



**SPARE PART LIST FOR MANUEL GEAR 6000STH 2+2  
ART. NO. (511840 – POS. 11) 511975**

<b>POS.</b>	<b>QTY.</b>	<b>DESCRIPTION</b>	<b>ART. NO.</b>
1	1	Intermediate Gear	511842
2	2	Polymer Bushing	RD100651
3	1	Polymer Bushing	RD100652
4	1	Shaft for Intermediate Gear	511843

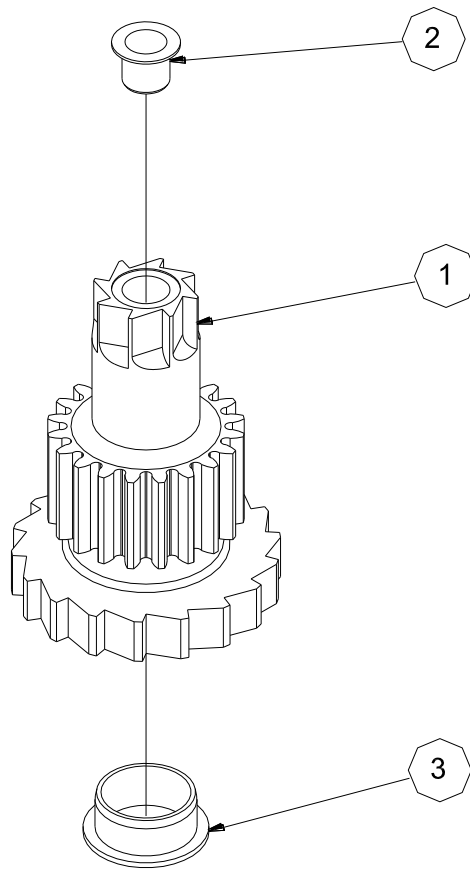
**EXPLODED VIEW FOR MANUEL GEAR 6000STH 2+2  
ART. NO. (511840 – POS. 12) 511973**



**SPARE PART LIST FOR MANUEL GEAR 6000STH 2+2  
ART. NO. (511840 – POS. 12) 511973**

POS.	QTY.	DESCRIPTION	ART. NO.
1	1	Free Wheel	511849
2	2	Pawl	511969
3	2	Spring	511984
4	2	Cylinder Head Cap Screw	DIN7991-A2-M5x8
5	1	Cover for Free Wheel	511855
6	2	Pin	DIN7-A1-3H8x16

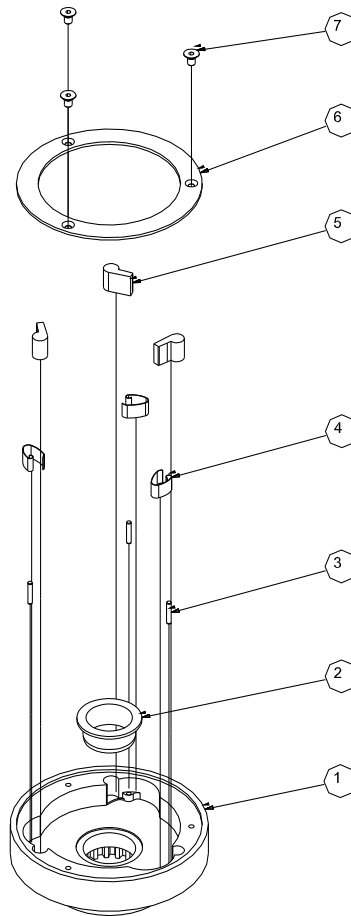
**EXPLODED VIEW FOR MANUEL GEAR 6000STH 2+2  
ART. NO. (511840 – POS. 13) 511974**



**SPARE PART LIST FOR MANUEL GEAR 6000STH 2+2  
ART. NO. (511840 – POS. 13) 511974**

<b>POS.</b>	<b>QTY.</b>	<b>DESCRIPTION</b>	<b>ART. NO.</b>
1	1	Intermediate Gear	511848
2	1	Polymer bearing	RD100650
3	1	Polymer bearing	RD100648

**EXPLODED VIEW FOR MANUEL GEAR 6000STH 2+2  
ART. NO. (511840 – POS. 14) 511972**

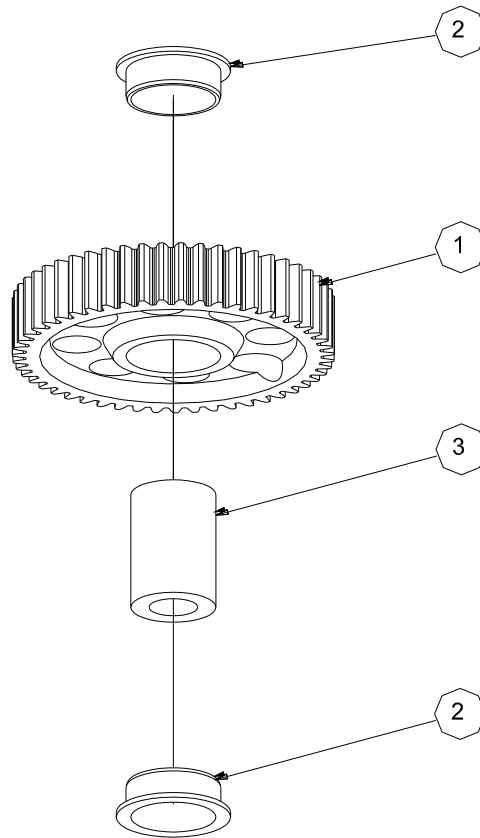


**SPARE PART LIST FOR MANUEL GEAR 6000STH 2+2  
ART. NO. (511840 – POS. 14) 511972**

POS.	QTY.	DESCRIPTION	ART. NO.
1	1	Free Wheel	511847
2	1	Polymer bushing	RD100648
3	3	Pin	DIN7-A1-3H8x16
4	3	Spring	511984
5	3	Pawl	511969
6	1	Cover for Free Wheel	511854
7	3	Screw	DIN7991-A4-M5x8



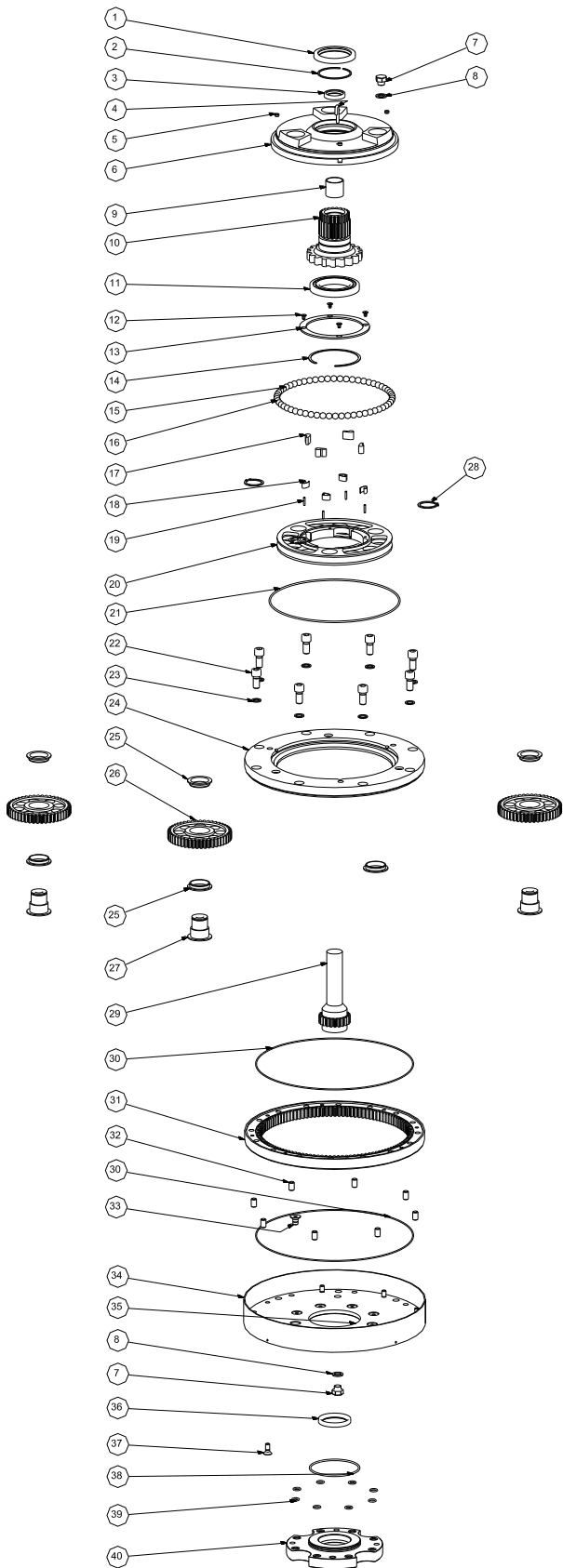
**EXPLODED VIEW FOR MANUEL GEAR 6000STH 2+2  
ART. NO. (511840 – POS. 23) 511976**



**SPARE PART LIST FOR MANUEL GEAR 6000STH 2+2  
ART. NO. (511840 – POS. 23) 511976**

<b>POS.</b>	<b>QTY.</b>	<b>DESCRIPTION</b>	<b>ART. NO.</b>
1	1	Drive Gear	511830
2	2	Polymer Bushing	511802
3	1	Drive Shaft	511831

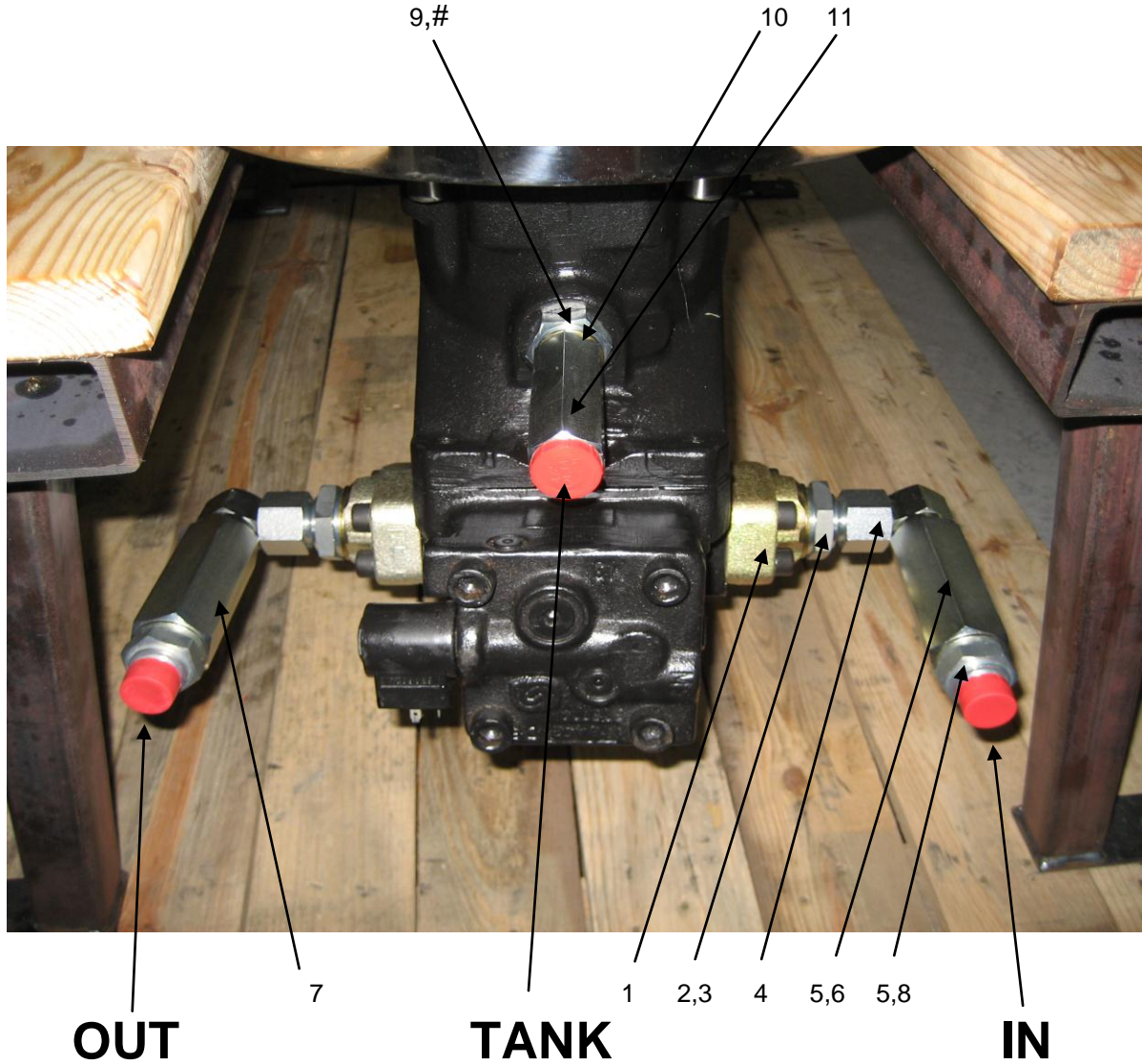
# EXPLODED VIEW FOR HYDRAULIC GEAR 6000STH 2+2 ART. NO. 511810



**SPARE PARTS LIST FOR HYDRAULIC GEAR 6000STH 2+2  
ART. NO. 511810**

<b>POS.</b>	<b>QTY.</b>	<b>DESCRIPTION</b>	<b>ART. NO.</b>
1	1	Sealing Ring	RD100848
2	1	Circlip	RD100441
3	1	Shaft Seal Ring	RD100847
4	1	Outlet Pipe	512018
5	3	Pin	511808
6	1	Gear Housing Top	511819
7	2	Plug	RD100112
8	2	Washer Bonded Seal	RD100449
9	1	Polymer Bearing	RD100637
10	1	Solhjul for træktandhjul	511820
11	1	Deep Groove Ball Bearing	RD100448
12	4	Countersunk Screw	DIN7991-A4-M5x8
13	1	Cover for Free Wheel	511823
14	1	Circlip	511838
15	29	Ball Ø12 Stainless	RD100429
16	29	Ball Ø12 DELRIN	RD100435
17	4	Pawl	511969
18	4	Spring	511984
19	4	Pin	DIN7-A1-3H8X1
20	1	Planet Carrier	511815
21	1	O-ring	RD100424
22	8	Cylinder Head Cap Screw	DIN912-A4-M12x25
23	8	Washer Bonded Seal	RD100447
24	1	Topplade f. gearhus	511814
25	6	Polymer Bearing	511801
26	3	Planet Wheel	511813
27	3	Shaft for Planet Wheel	511816
28	3	Circlip	DIN471-A2-A30
29	1	Wheel for driving sprocket	511822
30	2	O-ring	RD100423
31	1	Crown Gear	511812
32	8	Pin	511807
33	8	Countersunk Screw	DIN7991-A4-M10x16
34	1	Cover for Bottom	511817
35	1	Bottom Plate Bottom	511811
36	1	Sealing Ring	RD100426
37	8	Countersunk Screw	DIN7991-A4-M8x20
38	1	O-ring	RD100425
39	8	O-ring	RD100399
40	1	Mounting Plate for Motor	511821

**VIEW FOR HYDRAULIC COMPONENTS 2+2  
ART. NO. 512140**



**SPARE PARTS LIST FOR HYDRAULIC COMPONENTS 2+2  
ART NO.:512140**

POS.	QTY.	DESCRIPTION	ART. NO.
1	2	Flange	RD100481
2	2	Bonded Seal	RD100734
3	2	Hexagon Nipple	RD100870
4	2	Elbow	RD100868
5	4	Bonded Seal	RD100733
6	1	Non-return Valve	RD100871
7	1	Non-return Valve	RD100872
8	2	Hexagon Nipple	RD100869
9	1	Hexagon Nipple	RD100728
10	1	Bonded Seal	RD100292
11	1	Non-return Valve	RD100290

## LIMITED WARRANTY

1.1 ANDERSEN issue a three-year warranty on all their products covering manufacturing and material defects on condition that the products are used in normal fashion. The warranty shall apply for three years from the moment ANDERSEN sell the product concerned (to the first buyer).

1.2 Within the period of the warranty, and in accordance with the terms of the warranty, ANDERSEN undertake to replace or repair all defective components which have been used in normal fashion.

1.3 However, the warranty is subject to the limitations and exceptions outlined below.

### 2. Conditions and limitations:

2.1 ANDERSEN's liability shall be limited to repair or replacement of components which are defective owing to manufacturing or material defects.

2.2 ANDERSEN assume no other liability than this, not even liability for indirect losses caused by defect concerned, including operating losses, loss of profits, or damage caused to real property or moveable property occurring while the product concerned is in the position of the Buyer.

2.3 The Buyer alone shall bear the responsibility and risk involved as to whether the product is suitable for the application intended. ANDERSEN assumes no liability in this connection.

2.4 ANDERSEN assume no liability for defects which occur due to use of their products for purposes for which they are not intended, or for defects which occur owing to incorrect installation, corrosion, ultraviolet degradation, lack of maintenance, or any alteration or repair of the product carried out incorrectly by the Buyer. Finally, ANDERSEN assumes no liability for normal wear and tear, or for depreciation of value.

2.5 Nor do ANDERSEN assume any liability for service carried out by anyone other than authorised representatives of ANDERSEN, unless such service is carried out pursuant to guidelines laid down by ANDERSEN and in accordance with good craftsmanship.

2.6 The buyer shall inform ANDERSEN in writing of any defects with no undue delay once defects have been registered. Products being dealt with under the warranty shall be returned to ANDERSEN for repair unless any other agreement has been reached in writing.

2.7 ANDERSEN shall not cover costs incurred by the Buyer in connection with the transport or wages involved in a warranty case. Such costs shall be met by the Buyer in full.

### 3. Exceptions:

3.1 The warranty is only valid for one year in respect of components bought for the products concerned, such as electric motors, electric equipment, hydraulic pumps, motors and valves.

3.2 ANDERSEN assume no liability for consequential damage of ships, equipment, property or people by defects in ANDERSEN's products.

3.3 The company's products are subject to continuous development, and consequently ANDERSEN reserve the right to change designs and specifications without prior notice.

# WORLDWIDE DISTRIBUTION

## ANDERSEN Argentina

Argen Mast & Systems s.r.l.  
Av. Tiscornia 963  
(1642) San Isidro  
Buenos Aires  
Tel.: 11 4742 44 62  
Fax: 11 4742 44 62  
E-mail: info@argenmast.com.ar  
Web: www.argenmast.com.ar

## ANDERSEN Australia

Allyacht Spars Australia 1853 Lytton Rd.,  
Lytton  
Queensland  
Australia 4178  
Tel.: 07 3893 2233  
Fax: 07 3893 2478  
E-mail: info@allyachtspars.com.au  
Web: www.allyachtspars.com.au

## ANDERSEN Austria

Robert Lindemann KG  
Wendenstrasse 455  
D-20537 Hamburg  
Tel.: 040 21 11 970  
Fax: 040 21 11 97 30  
E-mail: info@lindemann-kg.de  
Web: www.lindemann-kg.de

## ANDERSEN Belgium

Jupiter Handelsmijl. BVBA  
Helststraat 51/12  
B-2630 Aartselaar  
Tel.: 03 457 43 81  
Fax: 03 457 68 21  
E-mail: info@jachtenjupiter.com  
Web: www.jachtenjupiter.com

## ANDERSEN Canada

Rekord Marine Enterprises Ltd  
8194 Ontario Street  
Vancouver, B.C., V5X 3E3  
Tel.: 604 325 5233  
Fax: 604 325 0326  
Toll free fax: 1-800-663-6424  
E-mail: jeremy@rekord-marine.com  
Web: www.rekord-marine.com

## ANDERSEN Croatia

Navela  
Castropola 54  
HR-52100 Pula  
Croatia  
Tel.: 052 214 542  
Fax: 052 213 558  
E-mail: navela@pu.t-com.hr  
Web: www.navela.hr

## ANDERSEN Czech Republic

Nereide Yachting Ltd.  
Vybiralova 972/70  
CZ-19800 Prague 9  
Tel.: 605 25 98 82  
Fax: 257 94 17 84  
E-mail: office@nereide-yachting.com  
Web: www.nereide-yachting.com

## ANDERSEN Denmark

WATSKI A/S  
Savsvinget 4  
DK-2970 Hørsholm  
Tel.: 45 76 40 11  
Fax: 45 76 40 12  
E-mail: kontaktdk@watski.com  
Web: www.watski.dk

## ANDERSEN Finland

Ky Jotiko-Marine Kb  
Unioninkatu 45  
SF-00170 Helsinki  
Tel.: 103 870 500  
Fax: 103 870 509  
E-mail: info@jotiko-marine.com  
Web: www.jotiko-marine.com

## ANDERSEN France

Greement Import – Head office:  
13 rue du Chêne Lassé  
Z.I. BP 284  
44803 Saint Herblain  
Tel.: 02 28 03 01 01  
Fax: 02 28 03 19 91  
E-mail: contact@greementimport.fr  
Web: [www.greementimport.fr](http://www.greementimport.fr)

## ANDERSEN Germany

Herman Gotthardt GmbH  
Leunastrasse 50  
D-22761 Hamburg  
Tel.: 040 851 50 50  
Fax: 040 850 91 33  
E-mail: info@gotthardt-yacht.de  
Web: www.gotthardt-yacht.de

## ANDERSEN Great Britain

IMP  
Jarman Way  
Royston  
Hertfordshire SG8 5HW  
Tel.: 01 763 241 300  
Fax: 01 763 241 770  
E-mail: sales@improducts.co.uk  
Web: www.improducts.co.uk

## ANDERSEN Greece

Meltemi Yachting Ltd.  
4, Metamorfoseos st Alimos  
GR-17455 Athens  
Tel.: 210 9849983  
Fax: 210 9844356  
E-mail: info@meltemi-yachting.gr  
Web: www.meltemi-yachting.gr

## ANDERSEN Hong Kong

Storm Force Marine Ltd  
1204 Dominion Centre  
43-53 Queens Road East  
Wanchai, Hong Kong  
Tel.: +852 2866 0114  
Fax: +852 2866 9260  
E-mail: simon@stormforcemarine.com  
Web: www.stormforcemarine.com

## ANDERSEN Hungary

Marina Yacht Sport  
Bécsi út 118. H-1037 Budapest  
Tel.: 1 322 86 55  
Fax: 1 322 9834  
E-mail: iroda@marina.hu  
Web: www.marina.hu

## ANDERSEN Italy

TOMASONI TOPSAIL S.p.A.  
Via E.Toti 55  
16035 Rapallo (GE)  
Tel.: 0185 2001  
Fax: 0185 263 160  
E-mail: vela@tomasoni.com  
Web: www.tomasoni.com/tecnico

## ANDERSEN Netherlands

Nautec Engineering B.V.  
Muyttertweg 17  
6075 AM Herkenbosch  
Tel.: 0475 537760  
Fax: 0475 537759  
E-mail: info@nautec.nl  
Web: www.nautec.nl

## ANDERSEN New Zealand

Nordic Marketing Ltd.  
P.O. Box 100669  
NSPS, North Shore City  
Tel.: 09 488 7605  
Fax: 09 488 7608  
E-mail: nordic@xtra.co.nz  
Web: www.nordic.co.nz

## ANDERSEN Norway

Skaane Marine AS  
Bromsveien 5  
N-3183 Horten  
Tel.: 33 02 05 90  
Fax: 33 02 05 99  
E-mail: post@skaane.no  
Web: www.skaane.no

## ANDERSEN Poland

Sail Service  
ul.Sienna 45  
80-605 Gdansk  
Tel.: 58 3 222 822  
Fax: 58 3 222 802  
E-mail: office@sailservice.com.pl  
Web: www.sailservice.com.pl

## ANDERSEN Portugal

Just Boats  
Lote 32, Urb. Goldra  
8100-263 Loulé  
Tel.: 289 994 204  
Fax: 289 994 485  
E-mail: info@just-boats.net  
Web: www.just-boats.net

## ANDERSEN Russia

Yachtglanz - Marine Equipment  
Portugiesischer Weg 14  
D-44143 Dortmund  
Tel.: +49 (0)231 996 48 35  
Fax: +49 (0)231 530 74 47  
E-mail: info@yachtglanz.com  
Web: www.yachtglanz.com

## ANDERSEN Singapore

Alquest Marketing  
66, Tannery Lane  
#02-06B Sindo Building  
Singapore 347805  
Tel.: 6749 9359  
Fax: 6749 9360  
E-mail: jason@alquest.com.sg  
Web: www.alquest.com

## ANDERSEN Slovenia

Tramontana  
Tesovnikova 88  
1000 Ljubljana  
Tel.: 01 568 37 32  
Fax: 01 565 48 88  
E-mail: info@tramontana-net.si  
Web: www.tramontana-net.si

## ANDERSEN South Africa

Manex & Power Marine  
5 Industry Street  
P.O. Box 173  
Paarden Eiland 7420 Cape Town  
Tel.: 021 511 7292  
Fax: 021 510 1487  
E-mail: manex@manex.co.za  
Web: www.manex.co.za

## ANDERSEN Spain/Mallorca

Yacht Riggers Mallorca, s.l.  
Passeig República Argentina, 34 bajos  
E-07200 FELANITX (Mallorca)  
Tel.: 971 58 41 30  
Fax: 971 58 41 31  
E-mail: info@yachtriggers.com  
Web: www.yachtriggers.com

## ANDERSEN Spain/Barcelona

Pertrechos Nauticos S.L.  
Buscarons, 6 bj. local 2  
08022 Barcelona  
Tel.: 93 418 66 32  
Fax: 93 418 56 48  
info@pertrechosnauticos.com  
www.pertrechosnauticos.com

## ANDERSEN Sweden

Navimo Nordic AB  
Lundenvägen 2  
S-473 31 Henån  
Tel.: 0304 360 60  
Fax: 0304 307 43  
E-mail: info@navimo.se  
Web: www.navimo.se

## ANDERSEN Switzerland

Robert Lindemann KG  
Wendenstrasse 455  
D-20537 Hamburg  
Tel.: 040 21 11 97 0  
Fax: 040 21 11 97 30  
E-mail: info@lindemann-kg.de  
Web: www.lindemann-kg.de

## ANDERSEN Trinidad & Tobago

Soca Sails  
Crewsinn Marina, Chaguaramas  
P.O. Box 608  
Trinidad, West Indies  
Tel.: 868 634-4178  
Fax: 868 634-1044  
E-mail: info@socasails.com  
Web: www.socasails.com

## ANDERSEN Turkey

Enigma Yachts Supply & Services Ltd.  
Istanbul Deri ve End serbest Bölgesi  
Hasan Yelmen Cad No 12  
34957 Tuzla; Istanbul.  
Tel.: 216 394 21 44  
Fax: 216 394 22 19  
E-mail: turkey@anderswinches.com  
Web: www.anderswinches.com

## ANDERSEN Ukraine

Yachtglanz - Marine Equipment  
Portugiesischer Weg 14  
D-44143 Dortmund  
Tel.: +49 (0)231 996 48 35  
Fax: +49 (0)231 530 74 47  
E-mail: info@yachtglanz.com  
Web: http://www.yachtglanz.com/

## ANDERSEN U.S.A.

Scandvik Inc.  
423 4th place SW  
Vero Beach  
Florida 32962  
Tel.: 772 567 2877  
Fax: 772 567 9113 Toll Free 1-800-535-6009  
E-mail: info@scandvik.com  
Web: www.scandvik.com