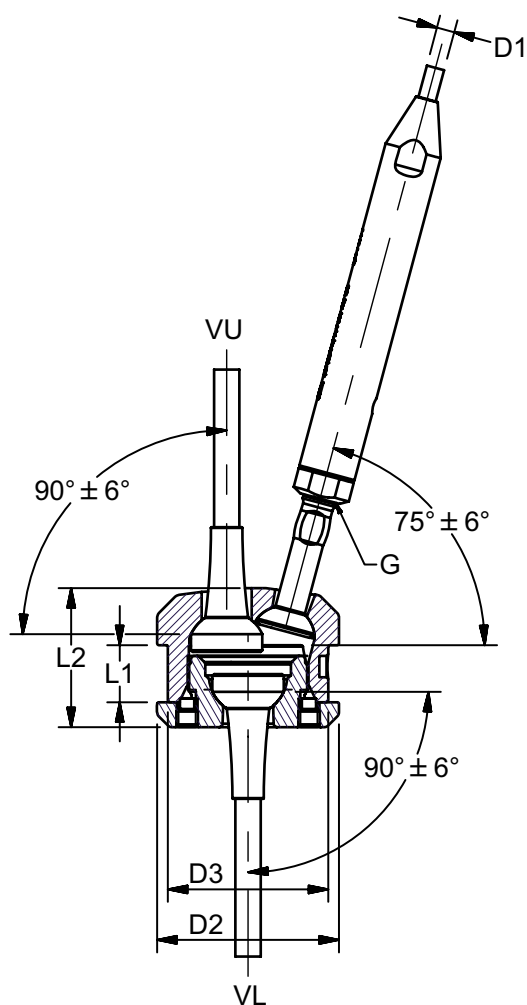


SPREADER TIPCUP

High Polished acid proof Stainless Steel

The stemball spreader tipcup is the ideal solution for the demanding boat owner with its exclusive looks and design.



ART. NO. COMPLETE	ART. NO. ONLY TIPCUP	VL	VU	D1	THREAD G	D2	D3	L1	L2	ANGLE	KG/100	PACK
ST716405	SC6438071	7,1	6,4	5,0	3/8"	48	42	23	42	± 6°		BULK
ST7171105	SC7138071	7,1	7,1	5,0	3/8"	48	42	23	42	± 6°		BULK
ST757164	SC7112075	7,5	7,1	6,4	1/2"	64	56	28	54	± 6°		BULK
ST577571	SC7512075	7,5	7,5	7,1	1/2"	64	56	28	54	± 6°		BULK
ST847564	SC7512084	8,4	7,5	6,4	1/2"	64	56	28	54	± 6°		BULK
ST848471	SC8412084	8,4	8,4	7,1	1/2"	64	56	28	54	± 6°		BULK
ST958464	SC8412095	9,5	8,4	6,4	1/2"	64	56	28	54	± 6°		BULK
ST959571	SC9512095	9,5	9,5	7,1	1/2"	64	56	28	54	± 6°		BULK
ST119571	SC9512111	11,1	9,5	7,1	1/2"	70	60	30	58	± 6°		BULK
ST119584	SC9558111	11,1	9,5	8,4	5/8"	70	60	30	58	± 6°		BULK
ST121171	SC1112127	12,7	11,1	7,1	1/2"	75	65	35	66	± 6°		BULK
ST121184	SC1158127	12,7	11,1	8,4	5/8"	75	65	35	66	± 6°		BULK
ST141184	SC1158143	14,3	11,1	8,4	5/8"	80	74	35	68	± 6°	253,8	BULK
ST141295	SC1234143	14,3	12,7	9,5	3/4"	80	74	35	68	± 6°		BULK
ST61495	SC1434168	16,8	14,3	9,5	3/4"	90	78	40	83	± 6°	388,2	BULK
ST161411	SC1478168	16,8	14,3	11,1	7/8"	90	78	40	83	± 6°		BULK

Note: Rod various length are available on request.

The user is responsible for choosing the proper rod diameter, and for correct assembly.

D3: Tolerance +0/-0,2



MARINE
RIGGING HARDWARE

STEMBALL TANG

High Polished acid proof Stainless Steel

The stemball tang is delivered complete with two tangs, connector rod and two stemballs.

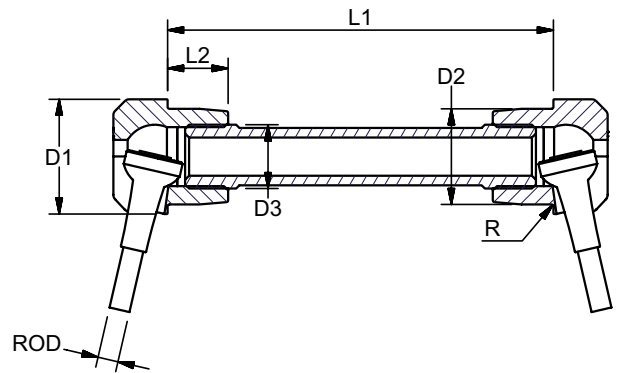
ART. NO.	ROD MM	DASH	D1	D2	D3	L1	L2	R1	BL	PACK
ST000004	4,0	3	33	*27	16	**	17,5	0,3	1700	BULK
ST000044	4,4	4	33	*27	16	**	17,5	0,3	2000	BULK
ST000005	5,0	6	33	*27	16	**	17,5	0,3	2800	BULK
ST000057	5,7	8	36	*30	20	**	19,0	0,3	3700	BULK
ST000006	6,0	9	36	*30	20	**	19,0	0,3	4000	BULK
ST000064	6,4	10	36	*30	20	**	19,0	0,3	4600	BULK
ST000071	7,1	12	38	*32	22	**	21,5	0,3	5600	BULK
ST000075	7,5	15	38	*32	22	**	21,5	0,3	6200	BULK
ST000008	8,0	16	45	*36	26	**	25,0	0,3	7000	BULK
ST000084	8,4	17	45	*36	26	**	25,0	0,3	7600	BULK
ST000095	9,5	22	48	*38	30	**	27,5	0,3	10000	BULK
ST000111	11,1	30	58	*48	33	**	29,0	0,3	13500	BULK
ST000127	12,7	40	62	*50	38	**	30,0	0,6	16500	BULK
ST000143	14,3	48	70	*55	40	**	30,5	0,6	20500	BULK
ST000168	16,8	60	80	*65	46	**	35,0	0,6	28500	BULK

The user is responsible for choosing the proper rod diameter and for correct assembly

Note: Breakloads are according to rod size (SAF 2205). D2: Tolerance +0/-0,1.

(D2) * Without sleeve for carbon masts.

** Mast size

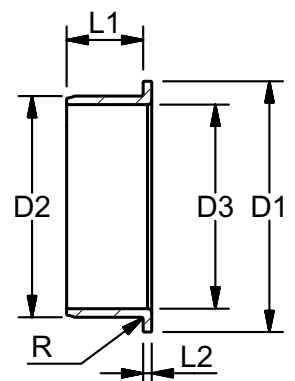


SLEEVE FOR CARBON MASTS

High Polished Stainless Steel - AISI 316

ART. NO.	D1	D2	D3	L1	L2	R	KG/100	PACK PCS
BC000005	34	30	27	8,5	1,5	0,3	1,3	BULK
BC000064	37	33	30	8,5	1,5	0,3	1,4	BULK
BC000075	39	35	32	10,5	1,5	0,3	1,7	BULK
BC000084	46	40	36	15,0	2,0	0,5	3,8	BULK
BC000095	49	43	38	15,0	2,0	0,5	4,1	BULK
BC000111	59	52	48	18,0	2,0	0,5	5,9	BULK
BC000127	63	54	50	23,0	2,0	0,5	7,7	BULK
BC000143	71	59	55	23,0	2,0	0,5	9,0	BULK
BC000168	81	69	65	23,0	2,0	0,5	10,5	BULK

D2: Tolerance +0/-0,1



EXTERNAL STEMBALL TANG

Anodized aluminium

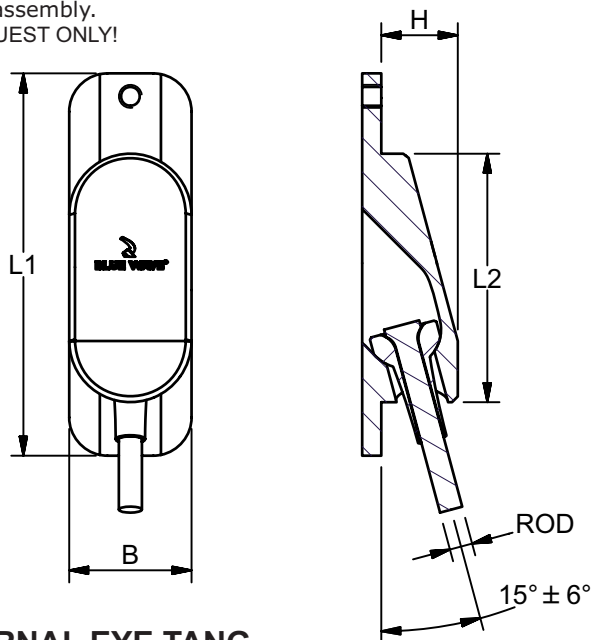
External stemball tang made of anodized aluminum to achieve best performance in saline and stressful environments.

ART. NO.	ROD	L1	L2	B	H	BL	KG/100
BS0405	4,0-5,0	90	58	32	17	2850 KG	6,6
BS5764	5,7-6,4	100	65	36	20	4600 KG	9,2
BS7175	7,1-7,5	115	76	42	22	6300 KG	13,2
BS8084	8,0-8,4	140	90	50	24	7700 KG	21,1
BS0095	9,5	150	98	54	30	10000 KG	31,5
BS0111	11,1	160	104	58	35	13500 KG	41,3

Note: Break loads are determined by rod (SAF 2205)

The user is responsible for choosing the proper rod diameter and for correct assembly.

ON REQUEST ONLY!



EXTERNAL EYE TANG

Anodized aluminium

External eye tang made of anodized aluminum to achieve best performance in saline and stressful environments. Can be used with rod and wire eye terminals.

ART.NO.	ROD	L1	L2	L3	A	B	D	H	BL	KG/100
BE1111KB	5,0-5,7	90	78	58	11,0	32	11,1	23	4700 KG	10,7
BE1313KB	5,7-7,1	100	88	65	13,5	36	12,7	27	5400 KG	13,4
BE1616KB	7,1-8,4	115	103	76	16,0	42	16,0	32	8000 KG	21,8
BE1921KB	8,4-9,5	140	124	90	21,0	50	18,8	41	13000 KG	39,9
BE2324KB	11,1	150	134	98	24,0	54	22,0	47	17000 KG	57,8

Note: Break loads are determined by rod (SAF 2205)

The user is responsible for choosing the proper rod diameter and for correct assembly.

ON REQUEST ONLY!

