



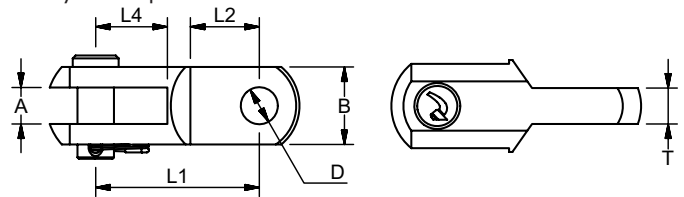
MARINE
RIGGING HARDWARE

TOGGLES MACHINED

High Polished Stainless Steel - AISI 316

ART. NO.	PIN SIZE	L1	L2	L4	D	A	B	T	BL	KG/100	PACK
140606M	6,35	28,0	11,0	13,0	6,6	6,35	12	5,5	1300	1,9	BULK
140808M	8,0	34,5	13,0	16,0	8,1	7,9	16	7,0	2600	4,3	BULK
140909M	9,5	41,5	17,0	19,0	9,7	9,5	19	9,0	3500	7,1	BULK
141111M	11,0	48,5	19,0	22,0	11,3	11,1	23	9,5	4100	12,8	BULK
141313M	12,7	57,0	24,0	25,0	12,9	12,7	27	12,5	6200	21,1	BULK
141616M	16,0	70,0	28,0	32,0	16,3	15,8	33	13,5	9800	35,2	BULK
141919M	19,0	89,0	39,0	38,0	19,3	19,0	42	18,0	13000	74,7	BULK
142222M	22,0	99,0	41,0	44,0	22,5	22,2	48	21,0	17000	108,2	BULK
142525M	25,4	112,0	44,0	51,0	25,8	25,4	53	24,0	24000	157,0	BULK

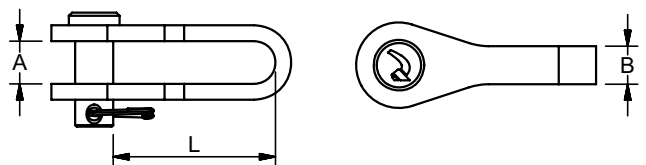
Note: All breakloads are determined by clevis pin.



TOGGLES STANDARD

High Polished Stainless Steel - AISI 316

ART.NO.	PIN SIZE	L	A	B	BL	KG/100	PACK
140006	6	25	7,5	7	1800	2,3	10
140008	8	30	8,5	7,7	3600	4	10
140010	9,5	40	10,5	10,2	4000	5,9	10
140011	11	45	11,5	10,5	4800	8,5	10
140012	12	50	13,5	12	5800	12,4	10
140016	16	55	17	15	8000	22,5	10
140019	19	60	21	18	13000	40,7	10
140022	22	100	25	25	17000	80,9	10



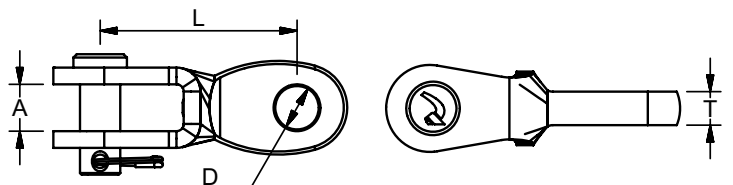
TOGGLES WITH EYE

High Polished Stainless Steel - AISI 316

ART. NO.	PIN SIZE	D	A	T	L	BL	KG/100	PACK
140506	5,0	5,5	7,5	5	26	1300 KG	1,8	25
140608	6,0	6,5	9,5	6	32	1800 KG	3,0	10
140810	8,0	8,5	11,0	8	36	3200 KG	5,5	10
141011	9,5	10,0	12,5	9	45	3500 KG	7,2	10
141111	11,0	11,5	12,0	9	51	5200 KG	12,1	10
141214	12,0	13	14,0	10	59	5900 KG	14,5	10
141616	14,0	14,5	22,0	14	78	7500 KG	28,0	10

Note: All breakloads are determined by clevis pin.

The user is responsible for choosing the proper cable diameter and for correct assembly.





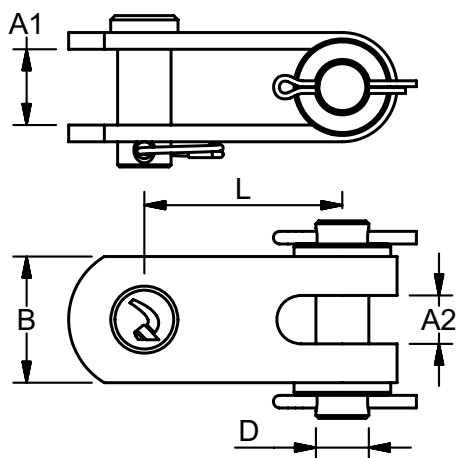
MARINE RIGGING SYSTEM

TOGGLES DOUBLE JAW

High Polished Stainless Steel - AISI 316

ART. NO.	PIN SIZE	D	L	A1	A2	B	KG/100	BL	PACK
250008	8,0	8,0	30,0	10,0	5,2	18,0	6,0	2350 KG	BULK
250010	9,5	9,5	38,0	12,0	6,2	22,0	11,9	3500 KG	BULK
250011	11,0	11,0	42,0	15,0	9,2	30,0	18,0	4100 KG	BULK
250012	12,7	12,6	47,5	18,0	11,2	30,0	24,0	6200 KG	BULK
250016	16,0	16,0	57,0	20,0	13,5	35,0	41,0	9800 KG	BULK
250019	19,0	19,0	63,0	24,0	17,5	40,0	70,0	13000 KG	BULK
250022	22,0	22,0	72,0	26,0	19,0	50,0	87,0	17000 KG	BULK
220025	25,4	25,0	82,0	29,0	22,0	60,0	107,0	24000 KG	BULK
250028	28,0	28,0	97,0	34,0	28,0	60,0	234,0	25500 KG	BULK
250032	32,0	32,0	105,0	40,0	34,0	75,0	340,0	31000 KG	BULK
250035	35,0	35,0	118,0	44,0	34,0	75,0	470,0	43000 KG	BULK

The user is responsible for choosing the proper cable diameter and for correct assembly.



“Zipper” one – off 1/4-Tonner

The British based “Zipper” was designed and built back in 1975, by designer David Thomas in an Epoxy Ply construction. The small racing boat was designed as a one - off 1/4-Tonner.

The “Zipper” was completely re-fitted, with 5mm Dyform Rigging onto Blue Wave MRT Racing Rigging Screws, Dyneema halyards, Wichard Blocks, and a Tuff Luff Head foil.

2008 Scoreboard:
Burnham Week Regatta:
Premium Lifafts Bell (Top Yacht in all Classes for the Week)
1st in Class for Midweek Series
1st in Class for ALL Week
1st in Class Last Saturday Cup (European Ferries Cup)

Main “Sail East “ Regattas:
2nd Overall and Class in Crouch sail East
2nd in class in Medway Regatta
2nd in Class overall Sail East out of 16 boats
9th Overall in Sail East out of 100 + boats

In 2006 it placed 6th Overall in the famous Round the Island Race out of 1300+ Boats. In the same week it placed 9th overall in the World 1/4-Ton championship out of 22 boats. Beating boats costing 10 times as much, and much newer.