

## Camcleat Accessories

## SMALL



RF5003



RF5005



RF5004



RF5002

## MEDIUM



RF5013



RF5015



RF5017



RF5213GRY



RF5213



RF5213R



RF5014



RF5012



RF5212

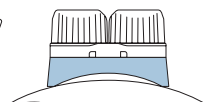
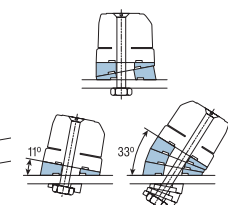
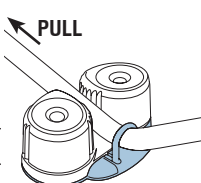
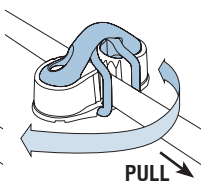
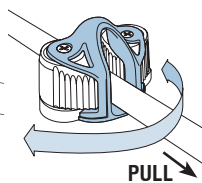
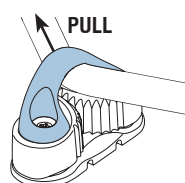
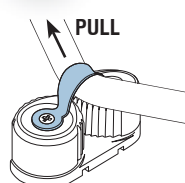


RF5016

## LARGE



RF5023



PRODUCT No.	DESCRIPTION	SUITS CLEAT	WEIGHT g	WEIGHT oz
<b>Saddles</b>				
RF5003	Saddle, flared top	Small	4	0.1
RF5013	Saddle, flared top	Medium	8	0.3
RF5023	Saddle, flared top	Large	15	0.5
RF5213	Saddle, black, stainless steel liner	Medium	8	0.3
RF5213GRY	Saddle, grey, stainless steel liner	Medium	8	0.3
RF5213R	Saddle, red, stainless steel liner	Medium	8	0.3
<b>Rope Guides</b>				
RF5004	Rope guide	Small	5	0.2
RF5014	Rope guide	Medium	10	0.4
<b>Fairleads</b>				
RF5005	Front mounted fairlead	Small	7	0.2
RF5015	Front mounted fairlead	Medium	14	0.5
RF5017*	Front mounted fairlead, heavy duty	Medium	20	0.7
<b>Wedge Kits</b>				
RF5002	Wedge kit	Small	5	0.2
RF5012	Wedge kit	Medium	11	0.4
RF5212	Wedge kit	Medium	11	0.4
<b>Riser / Curved Surface Adapter</b>				
RF5016	Riser / curved surface adapter	Medium	30	1.1

\*The RF5017 heavy duty fairlead can only be used with medium C-Cleats and T-Cleats manufactured from mid 2005 - indicated by two protruding vertical lines on the cleat base, located between the entry points for the fairlead stainless steel base wire element.