

Series 55



RC15518

- Series 55 traveller systems are generally specified for main and mizzen sheet systems on monohulls to 36m (120ft) or multihulls to 23m (75ft). They are also used for self tacking jib systems on boats 23m (75ft) and above.
- Precision machined bodies and Torton® ball bearings ensure free running performance even under extreme loads.

- Custom solutions can be developed to suit individual requirements.
- The RC15518 mainsheet car shown distributes the load of the 2:1 mainsheet evenly across the tandem cars.

PRODUCT No.	DESCRIPTION	LENGTH	WIDTH	M.W.L.	B.L.	WEIGHT	LENGTH	WIDTH	M.W.L.	B.L.	WEIGHT
		mm	mm	kg	kg	g	in.	in.	lb	lb	oz
RC15518	Car, 2 x single 150mm (6") Orbit blocks™, single control sheaves	740	125	10000	20000	13727	29 1/8	4 15/16	22050	44090	484.2

BB Ball Bearing

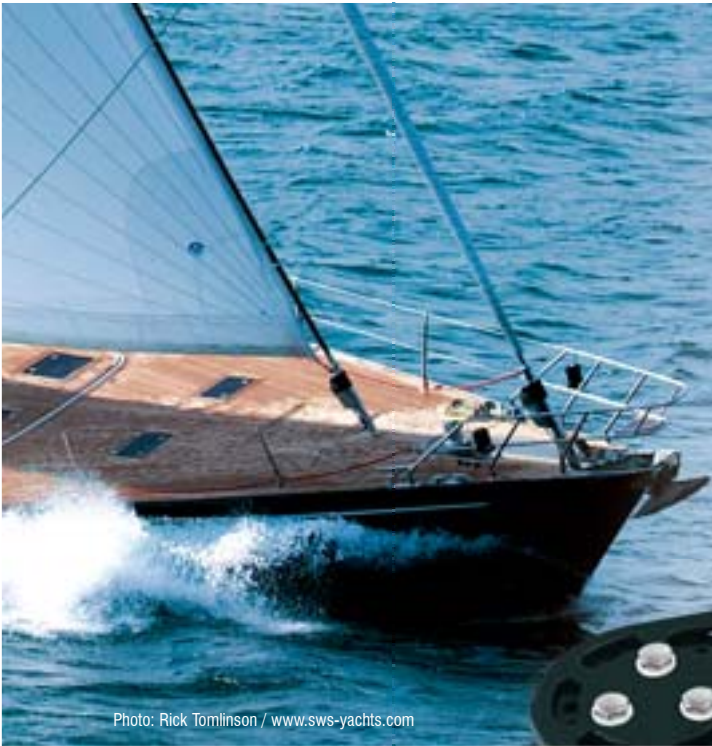


Photo: Rick Tomlinson / www.sws-yachts.com



M8 screw

RC15534

RC15535

- ✓ Series 55 ball bearing genoa cars are used on boats 28m (92ft) and above. Cars run on Torton® ball bearings, and have control sheaves for lead adjustment.
- ✓ Control sheaves are 100mm (4") diameter and suit up to 14mm (9/16") rope.
- ✓ The RC15534 genoa car pivots 45° from vertical for optimum alignment with sheet load.
- ✓ Fixed stirrup cars like RC15535 ensure that sheet leads are as close to the deck as possible, and have roller ball bearing sheaves and shaped side rollers for minimum friction under high loads.
- ✓ Custom solutions can be developed to suit individual requirements.
- ⊗ Alloy track, car bodies and end caps.
- ⊗ Torton® ball bearings (cars).
- ⊗ Torton® rollers (sheaves).
- ⊗ Carbon Black Acetal ball bearings (sheaves).
- ⊗ Highly polished grade 316 stainless steel fixtures.

PRODUCT No.	DESCRIPTION	SHEAVE	LENGTH	WIDTH	M.W.L.	B.L.	WEIGHT	SHEAVE	LENGTH	WIDTH	M.W.L.	B.L.	WEIGHT
		mm	mm	mm	kg	kg	g	in.	in.	in.	lb	lb	oz
BB Ball Bearing													
RC15534	Genoa car, single control sheave	180	480	125	9650	19300	10220	7	18 15/16	4 15/16	21270	42550	360.5
RC15535	Genoa car, fixed stirrup, single control sheave	150	500	125	8000	16000	12600	6	19 11/16	4 15/16	17640	35270	444.4

Series 55



Photo: www.royaldenship.com



- ✔ Series 55 sliderod outhaul cars are used on boats to 36m with conventional reefing and in-mast furling systems. They can also be used on multihulls 23m (75ft) and above.
- ✔ Adjustable stops can be used as a backup to lock a car into position – plunger stop can be locked in the “up” position.

- 🌀 Alloy car bodies and end caps.
- 🌀 Acetal sliderods.
- 🌀 Highly polished grade 316 stainless steel fixtures.

PRODUCT No.	DESCRIPTION	LENGTH	WIDTH	M.W.L.	B.L.	WEIGHT	LENGTH	WIDTH	M.W.L.	B.L.	WEIGHT
		mm	mm	kg	kg	g	in.	in.	lb	lb	oz
SR Sliderod											
RC15583	End stop, adjustable	185	125	-	-	2050	7 5/16	4 15/16	-	-	72.3
RC55541	Outhaul car, sliderods, 30mm (1 1/8") and 20mm (3/4") pins	420	125	8000	16000	10580	16 9/16	4 15/16	17640	35270	373.2



RC1550-1.0
RC1550-2.0
RC1550-3.0
RC1550-6.0



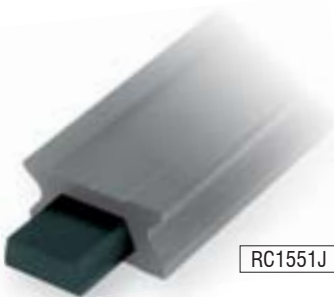
RC15584



RC15580



RC15581

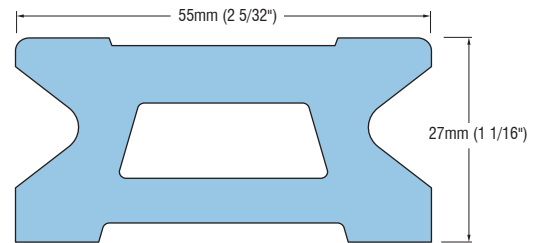


RC1551J



RF2429

4 x 8mm (5/16")



RC1550 track profile

TRACK FASTENINGS – 12mm (1/2") countersunk fasteners at 100mm (3 15/16") centres

STOP HOLES – 50mm (1 31/32") centres

- ✓ Traveller control ends have high performance roller ball bearing sheaves. Custom end controls can be developed to suit individual requirements.
- ✓ Standard low profile track has stop holes to accept cars with plunger stops.

- ✓ Padeyes are typically used for termination of 2:1 mainsheet systems on deck near one end of the track.

PRODUCT No.	DESCRIPTION	LENGTH	WIDTH	M.W.L.	B.L.	WEIGHT	LENGTH	WIDTH	M.W.L.	B.L.	WEIGHT
		mm	mm	kg	kg	g	in.	in.	lb	lb	oz
RC1550-1.0*	Track, black	996	55	-	-	2400	39 1/4	2 3/16	-	-	84.7
RC1550-2.0*	Track, black	1996	55	-	-	4800	78 5/8	2 3/16	-	-	169.3
RC1550-3.0*	Track, black	2996	55	-	-	7200	118	2 3/16	-	-	254.0
RC1550-6.0*	Track, black	5996	55	-	-	14400	236 1/4	2 3/16	-	-	507.9
RC1551J	Track joiner	60	-	-	-	30	2 3/8	-	-	-	1.1
RC15580	End cap, plastic	85	75	-	-	155	3 3/8	2 15/16	-	-	5.5
RC15581	End stop, aluminium	110	76	-	-	477	4 5/16	2 31/32	-	-	16.8
RC15584	Control end, single sheave	160	125	3850	7890	2140	6 5/16	4 15/16	8490	17390	75.5
RF2429	Padeye	-	71	-	7500	220	-	2 13/16	-	16535	7.8

* Silver track available - Order as RCxxxxxS