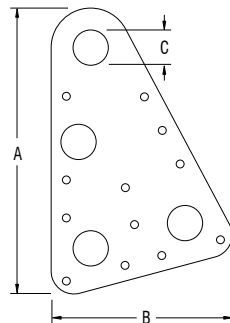
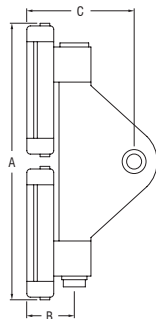
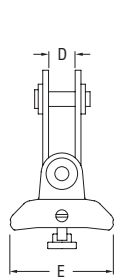


# Series 8



PRODUCT No.	DESCRIPTION	A	B	C	D	E	WEIGHT	A	B	C	D	E	WEIGHT
		mm	mm	mm	mm	mm	g	in.	in.	in.	in.	in.	oz
RC00010	Headboard plates (pair)	188	119	23	-	-	173	7 13/32	4 11/16	29/32	-	-	6.1
RC28160	Headboard car	214	30	75	16.5	51	520	8 7/16	1 3/16	2 15/16	2 1/32	2	18.3
RC28161	Headboard car	290	30	75	16.5	51	750	11 7/16	1 3/16	2 15/16	2 1/32	2	26.5
RC28460	Headboard car	214	30	75	16.5	51	520	8 7/16	1 3/16	2 15/16	2 1/32	2	18.3
RC28461	Headboard car	290	30	75	16.5	51	750	11 7/16	1 3/16	2 15/16	2 1/32	2	26.5



RC28163  
RC28463



RC00021



RC28166  
RC28466



RC28169  
RC28469



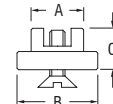
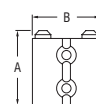
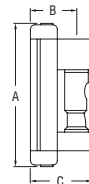
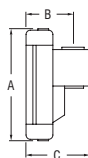
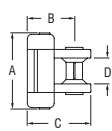
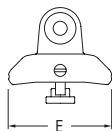
RC28181



RC20130  
RC20131  
RC20132  
RC20133



RC20101



- Long Cars: Monohulls to 18m (60ft) or sail area 60m<sup>2</sup> (646ft<sup>2</sup>).
- Long Cars: Multihulls to 13m (43ft) or sail area 48m<sup>2</sup> (517ft<sup>2</sup>).
- Short Cars: Monohulls to 16m (53ft) or sail area 53m<sup>2</sup> (570ft<sup>2</sup>).
- Short Cars: Multihulls to 11m (36ft) or sail area 42m<sup>2</sup> (452ft<sup>2</sup>).

- Refer to the Ronstan website for assistance in specifying system requirements and schematic diagrams.
- Suits standard batten receptacles and links, see pages 152-153.

PRODUCT No.	DESCRIPTION	A	B	C	D	E	WEIGHT	A	B	C	D	E	WEIGHT
		mm	mm	mm	mm	mm	g	in.	in.	in.	in.	in.	oz
RC00021	Bush, suits 13mm (1/2") webbing	-	-	-	-	-	1	-	-	-	-	-	0.1
RC20101	Ballslide™ feet/membranes (pair), suits RC281xx cars	-	-	-	-	-	1	-	-	-	-	-	0.1
RC20130	Ballslide™ feet/membranes (pair), suits RC284xx cars	13.3	24.0	11.4	-	-	22	17/32	15/16	7/16	-	-	0.8
RC20131	Ballslide™ feet/membranes (pair), suits RC284xx cars	11.6	23.0	11.8	-	-	20	15/32	29/32	15/32	-	-	0.7
RC20132	Ballslide™ feet/membranes (pair), suits RC284xx cars	14.0	24.0	11.4	-	-	20	9/16	15/16	7/16	-	-	0.7
RC20133	Ballslide™ feet/membranes (pair), suits RC284xx cars	14.0	24.0	11.4	-	-	22	9/16	15/16	7/16	-	-	0.8
RC28163	Intermediate car	76.0	30.0	37.0	18	51	115	3	1 3/16	1 15/32	23/32	2	4.1
RC28166	Batten car	92.0	30.0	37.0	-	51	140	3 5/8	1 3/16	1 15/32	-	2	4.9
RC28169	Quick release batten car	105.0	30.0	37.0	-	51	220	4 1/8	1 3/16	1 15/32	-	2	7.8
RC28181	End stop	54.0	45.0	-	-	-	35	2 1/8	1 25/32	-	-	-	1.2
RC28463	Intermediate car	76.0	30.0	37.0	18	51	115	3	1 3/16	1 15/32	23/32	2	4.1
RC28466	Batten car	92.0	30.0	37.0	-	51	140	3 5/8	1 3/16	1 15/32	-	2	4.9
RC28469	Quick release batten car	105.0	30.0	37.0	-	51	220	4 1/8	1 3/16	1 15/32	-	2	7.8