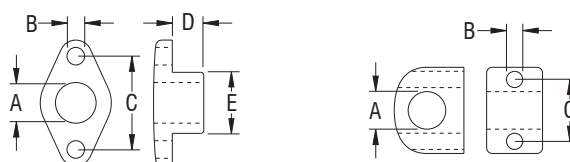


Fairleads & Bushes



- ✔ Fairleads are a simple and economical means of containing, deflecting or correcting the lead angle of control lines.
- ✔ Manufactured from Nylon, styles and sizes to suit different rope diameters.
- ✔ Fairleads with stainless steel liners provide greater abrasion resistance.
- ✔ Nylon bushes provide chafe protection where lines pass through decks, bulkheads or spars. They are available to suit various line diameters and deck thicknesses.
- ✔ Low profile versions without mounting screws may be glued or pressed into place.
- ✔ Impact resistant, UV stabilised Nylon.

PRODUCT No.		A mm	B mm	C mm	D mm	E mm	WEIGHT g	A in.	B in.	C in.	D in.	E in.	WEIGHT oz
Fairleads													
PNP120	Plastic fairlead, stainless steel lined	6.5	3	15.0	-	-	2	1/4	1/8	5/8	-	-	0.1
RF9	Plastic fairlead	7.0	4	15.0	-	-	5	9/32	5/32	9/16	-	-	0.2
PNP121	Plastic fairlead, stainless steel lined	8.0	4	20.0	-	-	4	5/16	5/32	13/16	-	-	0.1
PNP122	Plastic fairlead, stainless steel lined	11.5	5	22.5	-	-	5	7/16	3/16	7/8	-	-	0.2
PNP123	Plastic fairlead, stainless steel lined	13.5	5	25.4	-	-	8	1/2	3/16	1	-	-	0.3
RF59	Plastic fairlead, stainless steel lined	14.0	5	25.0	-	-	17	9/16	3/16	1	-	-	0.6
PNP124	Plastic fairlead, stainless steel lined	16.0	5	25.4	-	-	12	5/8	3/16	1	-	-	0.4
RF2358	Plastic fairlead, stainless steel lined	16.0	5	25.0	-	-	26	5/8	3/16	1	-	-	0.9
Bushes													
PNP181	Plastic bush, glue-in, stainless steel lined	4.0	-	-	14.0	13.0	5	5/32	-	-	9/16	1/2	0.2
PNP186	Plastic bush, screw mount, stainless steel lined	7.0	3	28.0	5.0	16.0	5	9/32	1/8	1 3/32	3/16	5/8	0.2
PNP187	Plastic bush, screw mount, stainless steel lined	7.0	3	28.0	14.0	16.0	8	9/32	1/8	1 3/32	9/16	5/8	0.3
PNP182	Plastic bush, glue-in, stainless steel lined	7.0	-	-	5.0	16.0	4	9/32	-	-	3/16	5/8	0.1
PNP183	Plastic bush, glue-in, stainless steel lined	7.0	-	-	14.0	16.0	7	9/32	-	-	9/16	5/8	0.2
RF62	Plastic bush, glue-in, stainless steel lined	8.0	-	-	6.5	13.0	5	5/16	-	-	1/4	1/2	0.2
PNP188	Plastic bush, screw mount, stainless steel lined	11.0	3	31.0	5.0	19.0	5	7/16	1/8	1 7/32	3/16	3/4	0.2
PNP189	Plastic bush, screw mount, stainless steel lined	11.0	3	31.0	14.0	19.0	10	7/16	1/8	1 7/32	9/16	3/4	0.4
PNP255	Plastic bush, glue-in, stainless steel lined	11.0	-	-	5.0	20.0	3	7/16	-	-	3/16	25/32	0.1
PNP256	Plastic bush, glue-in, stainless steel lined	11.0	-	-	14.0	20.0	7	7/16	-	-	9/16	25/32	0.2
PNP257	Plastic bush, screw mount, stainless steel lined	13.0	4	36.0	14.0	26.0	16	1/2	5/32	1 13/32	9/16	1	0.6
PNP258	Plastic bush, screw mount, stainless steel lined	13.0	4	36.0	5.0	26.0	10	1/2	5/32	1 13/32	3/16	1	0.4
PNP259	Plastic bush, screw mount, stainless steel lined	13.0	-	-	5.0	23.0	7	1/2	-	-	3/16	25/32	0.2
PNP260	Plastic bush, screw mount, stainless steel lined	13.0	-	-	14.0	23.0	13	1/2	-	-	9/16	25/32	0.5
PNP261	Plastic bush, screw mount, stainless steel lined	15.0	4	39.0	5.0	28.0	11	9/16	5/32	1 17/32	3/16	1 3/32	0.4
PNP262	Plastic bush, screw mount, stainless steel lined	15.0	4	39.0	14.0	28.0	20	9/16	5/32	1 17/32	9/16	1 3/32	0.7