

# Pins & Rings



**SPLIT RING**

RF113  
RF114



**SPLIT RING**

RF686  
RF687  
RF688



**RETAINING CLIP**

RF413



**CLEVIS PIN**

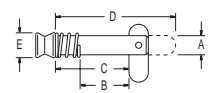
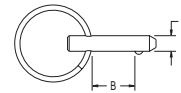
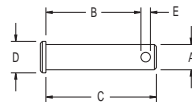
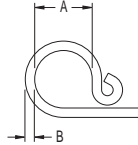
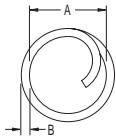


**FAST PIN**

RF5310



**TOGGLE PIN**



PRODUCT No.	DESCRIPTION	A	B	WEIGHT	A	B	WEIGHT	SUITS CLEVIS PINS
		mm	mm	g	in.	in.	oz	
<b>Split Rings and Clips</b>								
RF113	Split ring	9.5	1.0	1	3/8	1/32	0.1	RF258 - RF266
RF114	Split ring	11.1	1.3	2	7/16	1/16	0.1	RF260 - RF266
RF413	Retaining Clip	16.0	2.7	3	5/8	3/32	0.1	RF267 - RF274
RF686	Split ring	14.3	1.3	4	9/16	1/16	0.1	RF260 - RF274
RF687	Split ring	18.8	1.6	5	3/4	1/16	0.2	RF260 - RF274
RF688	Split ring	25.0	2.0	5	1	3/32	0.2	RF267 - RF278

PRODUCT No.	A	B	C	D	E	WEIGHT	A	B	C	D	E	WEIGHT
	mm	mm	mm	mm	mm	g	in.	in.	in.	in.	in.	oz
<b>Clevis Pins</b>												
RF259	4.6	9.0	12.2	6.4	2.0	2	3/16	11/32	15/32	1/4	5/64	0.1
RF260	4.8	12.7	16.0	6.4	2.2	3	3/16	1/2	5/8	1/4	3/32	0.1
RF261	4.8	19.0	22.0	6.4	2.2	3	3/16	3/4	7/8	1/4	3/32	0.1
RF262	4.8	25.0	28.0	6.4	2.2	5	3/16	1	1 1/8	1/4	3/32	0.2
RF263	6.4	12.7	16.5	7.9	2.4	5	1/4	1/2	21/32	5/16	3/32	0.2
RF264	6.4	19.0	23.0	7.9	2.4	5	1/4	3/4	29/32	5/16	3/32	0.2
RF265	6.4	25.0	30.0	7.9	2.4	10	1/4	1	1 3/16	5/16	3/32	0.4
RF266	6.4	32.0	36.0	7.9	2.4	10	1/4	1 1/4	1 7/16	5/16	3/32	0.4
RF267	7.9	12.7	16.5	9.5	2.7	10	5/16	1/2	21/32	3/8	3/32	0.4
RF268	7.9	19.0	23.0	9.5	2.7	10	5/16	3/4	29/32	3/8	3/32	0.4
RF269	7.9	25.0	30.0	9.5	2.7	10	5/16	1	1 3/16	3/8	3/32	0.4
RF270	7.9	32.0	36.0	9.5	2.7	15	5/16	1 1/4	1 7/16	3/8	3/32	0.5
RF271	9.5	19.0	24.0	12.7	4.0	15	3/8	3/4	15/16	1/2	5/32	0.5
RF272	9.5	25.0	31.0	12.7	3.6	20	3/8	1	1 1/4	1/2	5/32	0.7
RF273	9.5	32.0	37.0	12.7	3.7	20	3/8	1 1/4	1 7/16	1/2	5/32	0.7
RF274	9.5	38.0	43.0	12.7	3.7	25	3/8	1 1/2	1 11/16	1/2	5/32	0.9
RF275	12.7	19.0	25.0	15.9	3.5	30	1/2	3/4	1	5/8	1/8	1.1
RF276	12.7	25.0	31.0	15.9	3.5	35	1/2	1	1 1/4	5/8	1/8	1.2
RF277	12.7	32.0	38.0	15.9	3.5	40	1/2	1 1/4	1 1/2	5/8	1/8	1.4
RF278	12.7	38.0	44.0	15.9	3.5	50	1/2	1 1/2	1 3/4	5/8	1/8	1.8
RF537	15.9	25.0	33.0	19.0	4.0	55	5/8	1	1 5/16	3/4	5/32	1.9
RF538	15.9	32.0	38.0	19.0	4.4	65	5/8	1 1/4	1 1/2	3/4	5/32	2.3
RF539	15.9	38.0	45.0	19.0	4.4	75	5/8	1 1/2	1 3/4	3/4	5/32	2.7
<b>Fast Pin</b>												
RF5310	4.8	12.5	-	-	-	7	3/16	1/2	-	-	-	0.2
<b>Toggle Pins</b>												
RF115x1/2	6.4	7.8	17.4	32.5	7.9	10	1/4	5/16	11/16	1 9/32	5/16	0.4
RF115x5/8	6.4	11.2	20.8	35.9	7.9	10	1/4	7/16	13/16	1 13/32	5/16	0.4
RF115x3/4	6.4	14.2	23.8	38.9	7.9	10	1/4	9/16	15/16	1 17/32	5/16	0.4
RF115x1	6.4	20.5	30.1	45.2	7.9	10	1/4	13/16	1 1/8	1 25/32	5/16	0.4
RF115x1 1/4	6.4	27.1	36.7	51.8	7.9	15	1/4	1 1/16	1 7/16	2 1/32	5/16	0.5
RF117x1 1/2	9.5	32.2	47.2	69.6	12.7	35	3/8	1 9/32	1 27/32	2 3/4	1/2	1.2

Note: 'B' is the maximum thickness of material the toggle pin can pass through, allowing correct toggle operation.