

Shackles



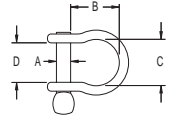
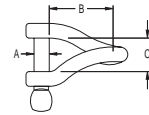
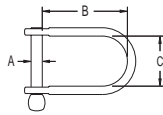
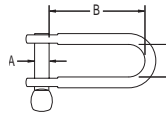
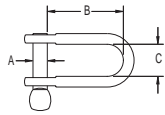
STANDARD DEE

LONG DEE

WIDE DEE

TWISTED

BOW



- High strength to weight ratio.
- Many shapes and sizes to suit any application.

- Coined shackle pin head available with hole for seizing wire.
- Grade 316 stainless steel bodies and pins.

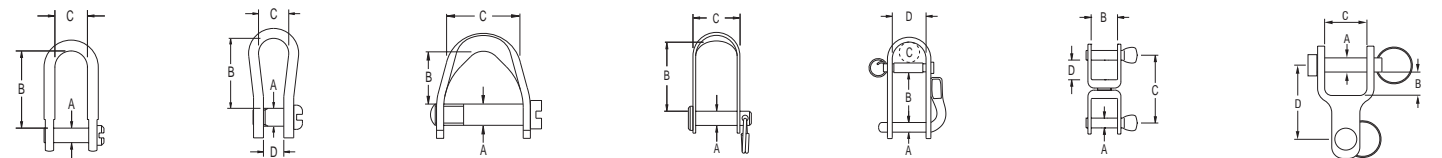
PRODUCT No.	A	B	C	D	(U.D.L.)*	(P.L.)*	WEIGHT	A	B	C	D	(U.D.L.)*	(P.L.)*	WEIGHT
	mm	mm	mm	mm	B.L. kg	B.L. kg		g	in.	in.	in.	in.	B.L. lb	
Standard Dee														
RF1851	3.2	12	9	-	550	280	2	1/8	15/32	11/32	-	1210	620	0.1
RF1806	4.0	16	10	-	800	600	5	5/32	5/8	13/32	-	1760	1320	0.2
RF616	4.8	18	11	-	1400	800	15	3/16	23/32	7/16	-	3090	1760	0.5
RF617	6.4	22	14	-	2300	1400	25	1/4	7/8	9/16	-	5070	3090	0.9
RF618	7.9	29	16	-	3600	2700	50	5/16	1 5/32	5/8	-	7940	5950	1.8
RF619**	9.5	38	17	-	5400	3600	80	3/8	1 1/2	21/32	-	11900	7940	2.8
RF620**	12.7	42	19	-	7700	7500	130	1/2	1 31/32	3/4	-	16980	16530	4.6
RF1035***	15.9	47	25	-	14000	11000	280	5/8	1 25/32	1	-	30860	24250	9.9
Long Dee														
RF621	4.0	26	10	-	800	600	10	5/32	1 1/32	13/32	-	1760	1320	0.4
RF622	4.8	31	11	-	1400	800	15	3/16	1 7/32	7/16	-	3090	1760	0.5
RF623	6.4	44	15	-	2300	1400	30	1/4	1 21/32	19/32	-	5070	3090	1.1
RF624	7.9	55	17	-	3600	2700	60	5/16	2 5/32	21/32	-	7940	5950	2.1
RF625**	9.5	60	17	-	5800	4500	90	3/8	2 3/8	21/32	-	12790	9920	3.2
RF626**	12.7	72	18	-	7700	7500	155	1/2	2 27/32	23/32	-	16980	16530	5.5
Wide Dee														
RF1850S	3.2	11	13	-	550	280	2	1/8	7/16	1/2	-	1210	620	0.1
RF1852	4.8	29	20	-	1400	700	15	3/16	1 5/32	25/32	-	3090	1540	0.5
RF1853	6.4	39	31	-	2300	1100	26	1/4	1 17/32	1 7/32	-	5070	2430	0.9
RF639	7.9	51	28	-	3600	2300	70	5/16	2	1 3/32	-	7940	5070	2.5
RF640	9.5	56	29	-	5800	4000	95	3/8	2 7/32	1 5/32	-	12790	8820	3.4
RF641**	12.7	68	33	-	7700	5500	170	1/2	2 11/16	1 5/16	-	16980	12130	6.0
Twisted														
RF627	4.0	23	9	-	800	600	5	5/32	29/32	11/32	-	1760	1320	0.2
RF628	4.8	28	10	-	1400	800	15	3/16	1 3/32	13/32	-	3090	1760	0.5
RF629	6.4	39	13	-	2300	1400	30	1/4	1 17/32	1/2	-	5070	3090	1.1
RF630	7.9	48	16	-	3600	2700	65	5/16	1 7/8	5/8	-	7940	5950	2.3
RF631**	9.5	54	19	-	5800	4500	90	3/8	2 1/8	3/4	-	12790	9920	3.2
RF632**	12.7	65	19	-	7700	7500	165	1/2	2 9/16	3/4	-	16980	16530	5.8
Bow														
RF613S****	3.0	12	9	6.4	550	280	3	1/8	15/32	11/32	1/4	1210	620	0.1
RF633	4.0	15	17	11.0	800	600	5	5/32	9/16	9/16	7/16	1760	1320	0.2
RF634	4.8	18	14	13.0	1400	800	10	3/16	23/32	9/16	1/2	3090	1760	0.4
RF635	6.4	21	19	16.0	2300	1400	20	1/4	13/16	3/4	5/8	5070	3090	0.7
RF636	7.9	27	22	16.0	3600	2700	45	5/16	1 1/16	7/8	5/8	7940	5950	1.6
RF638**	7.9	27	22	16.0	3600	2700	45	5/16	1 1/16	7/8	5/8	7940	5950	1.6
RF637**	9.5	52	36	21.0	5800	4500	90	3/8	2 1/16	1 13/32	13/16	12790	9920	3.2

* (U.D.L.) B.L. – The "Uniformly Distributed Load" breaking load of the shackle; the load is applied across the full span of the shackle pin.

(P.L.) B.L. – The "Point Load" breaking load of the shackle; the load is only applied at the centre or one side of the shackle pin.

** Shackle pins drilled for seizing wire. ***RF1035 features 20.7mm (13/16") A/F hexagonal pin head. ****RF613S has a slotted head.

Shackles



- ✔ Halyard shackles have a lever action for easy opening and closing, with a keyed pin for positive locking.
- ✔ Slotted shackle pins are low profile to prevent snagging on ropes etc.
- ✔ Lightweight clevis pin shackles use a split ring for security.
- ✔ Shackle keys suit both coined and slotted pins.
- ✔ Grade 316 stainless steel bodies and pins.

PRODUCT No.	A mm	B mm	C mm	D mm	(U.D.L.)* B.L. kg	(P.L.)* B.L. kg	WEIGHT g	A	B	C	D	(U.D.L.)* B.L. lb	(P.L.)* B.L. lb	WEIGHT oz	
								in.	in.	in.	in.				
Standard Slotted Pin															
RF615	4.0	16.0	10.0	-	800	600	5	5/32	5/8	13/32	-	1760	1320	0.2	
RF615A	4.0	13.0	8.0	-	1000	800	7	5/32	1/2	5/16	-	2200	1760	0.2	
RF150	4.7	18.0	12.0	-	1400	800	10	3/16	23/32	15/32	-	3090	1760	0.4	
RF707S	4.8	17.0	18.0	-	1200	700	10	3/16	21/32	23/32	-	2640	1540	0.4	
RF151	6.4	22.0	16.0	-	2300	1400	20	1/4	7/8	5/8	-	5070	3090	0.7	
RF152	7.9	29.0	17.0	-	3600	2700	45	3/16	1 5/32	21/32	-	7940	5950	1.6	
Special Slotted Pin															
RF614	4.8	19.0	10.0	5.0	1400	1400	5	3/16	13/32	3/8	3/16	3090	3090	0.2	
RF806S	4.8	11.5	16.0	-	1100	-	10	3/16	7/16	5/8	-	2425	-	0.4	
Lightweight Clevis Pin															
RF801	4.8	7.4	7.0	-	480	320	3	3/16	9/32	9/32	-	1060	710	0.1	
RF807	4.8	20.0	14.0	-	700	-	10	3/16	25/32	9/16	-	1540	-	0.4	
RF802	4.9	9.3	8.8	-	660	440	5	3/16	3/8	11/32	-	1460	970	0.2	
RF803	5.9	12.2	11.3	-	900	600	10	7/32	15/32	7/16	-	1980	1320	0.4	
RF804	5.9	13.3	13.3	-	1480	990	12	7/32	17/32	17/32	-	3260	2180	0.4	
RF805	7.9	16.7	17.6	-	1800	1200	25	5/16	21/32	11/16	-	3970	2650	0.9	
Halyard															
RF1032	4.8	22.0	10.0	15.0	1200	900	30	3/16	7/8	13/32	19/32	2650	1980	1.1	
RF1033	6.4	32.0	13.0	19.0	2100	1500	55	1/4	1 1/4	1/2	3/4	4630	3310	1.9	
RF1034	7.9	39.0	18.5	20.0	2700	2200	90	5/16	1 17/32	23/32	25/32	5950	4850	3.2	
Swivel															
RF576	4.0	10.0	22.0	6.0	500	350	10	5/32	13/32	7/8	15/64	1100	770	0.4	
RF120	4.8	12.0	32.0	8.7	650	650	20	3/16	15/32	1 1/4	11/32	1430	1430	0.7	
RF173	6.4	15.0	42.0	11.9	1100	700	40	1/4	19/32	1 21/32	19/32	2420	1540	1.4	
RF75**	7.9	17.0	60.0	15.8	2300	2100	15	5/16	21/32	2 3/8	5/8	5070	4620	0.5	
Two Way Link															
RF815	5.0	5.2	10.0	19.0	1100	900	14	3/16	7/32	13/32	3/4	2425	1980	0.5	
RF816	6.0	6.7	12.2	22.6	1200	1000	21	1/4	1/4	15/32	7/8	2650	2200	0.7	
Shackle Keys															
RF1320BLU	Heavy duty shackle key, multi-purpose tool. Suits coined head shackle pins. Features sockets for 1/6" and 1/4" plain and nylock nuts. Screwdriver, ideal for tightening small drain plugs. Blue plastic grip.						90								3.2
RF1320R	As per RF1320BLU, but RED plastic.						90								3.2
RF1321	Micro shackle key. Suits coined head shackle pins up to 6mm (1/4") diam. Screwdriver. Bottle opener, Lanyard included.						11								0.4

* (U.D.L.) B.L. – The "Uniformly Distributed Load" breaking load of the shackle; the load is applied across the full span of the shackle pin.

(P.L.) B.L. – The "Point Load" breaking load of the shackle; the load is only applied at the centre or one side of the shackle pin.

** RF75 swivel shackle has Ball Bearings