

# Padeyes & Saddles



RF44  
RF415  
RF416



RF529



RF2429



RF2430-06  
RF2430-08  
RF2432-09  
RF2432-10  
RF2432-12



RF2433-09  
RF2433-10  
RF2433-12



SADDLE - NARROW



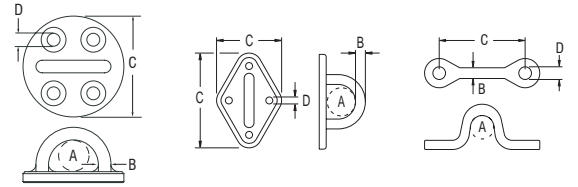
SADDLE - FLARED TOP



SADDLE - FERRULE EYE

Removable screw-in padeyes are ideal for attaching blocks which may be removed when not in use or while cruising. A threaded plug remains in the base section when the top plate is removed to prevent dirt and grit from entering the threads.

Grade 316 stainless steel.  
Duplex SD100 stainless steel (RF2429).



PRODUCT No.		A mm	B mm	C mm	D mm	B.L. kg	WEIGHT g	A in.	B in.	C in.	D in.	B.L. lb	WEIGHT oz
<b>Padeyes</b>													
RF2432-09		14.0	9.0	55.0	6.0	4000	105	9/16	11/32	2 5/32	1/4	8820	3.7
RF2433-09	Removable, screw-in	14.0	9.0	55.0	6.0	4000	285	9/16	11/32	2 5/32	1/4	8820	10.1
RF2430-06		16.0	6.4	51.0	6.5	2500	124	5/8	1/4	2	1/4	5510	4.4
RF2430-08		16.0	7.9	57.0	8.0	3500	127	5/8	5/16	2 1/4	5/16	7720	4.5
RF2429	Investment cast	19.0	10.0	71.0	8.0	7500	220	3/4	5/16	2 13/16	13/32	16535	7.8
RF2432-10		19.0	10.0	72.0	8.0	5000	190	3/4	13/32	2 27/32	5/16	11020	6.7
RF2433-10	Removable, screw-in	19.0	10.0	72.0	8.0	5000	550	3/4	13/32	2 27/32	5/16	11020	19.4
RF2432-12		22.5	12.0	85.0	10.0	6000	390	7/8	15/32	3 11/32	13/32	13230	13.8
RF2433-12	Removable, screw-in	22.5	12.0	85.0	10.0	8000	1025	7/8	15/32	3 11/32	15/32	17640	36.2
<b>Pad Eyes - Diamond Base</b>													
RF529*	Including nylon mounting pad	18.0	8.0	75 x 51	6.4	2000	100	23/32	5/16	3 x 2	1/4	4400	4.0
RF415	Including nylon mounting pad	21.0	8.0	75 x 51	5.0	1000	75	13/16	5/16	3 x 2	3/16	2200	2.7
RF44	Including nylon mounting pad	22.0	11.0	94 x 60	6.7	2000	130	7/8	7/16	3 11/16 x 2 3/8	1/4	4400	4.6
RF416		25.0	6.4	83 x 35	4.8	800	40	1	1/4	3 1/4 x 1 3/8	3/16	1760	1.4
<b>Saddles - Narrow</b>													
RF134		36.5	5.0	4.8	14.0	-	5	1 7/16	3/16	3/16	9/16	-	0.2
RF134A	Countersunk holes	36.5	5.0	4.8	14.0	-	5	1 7/16	3/16	3/16	9/16	-	0.2
RF498		28.0	4.0	3.5	10.0	-	4	1 1/16	5/32	1/8	13/32	-	0.1
RF528		44.0	8.0	7.0	12.0	-	25	1 23/32	5/16	9/32	15/32	-	0.9
RF1054		60.0	8.0	5.5	18.0	-	35	2 3/8	5/16	7/32	23/32	-	1.2
RF1055		45.0	6.0	7.0	16.0	-	15	1 25/32	1/4	9/32	5/8	-	0.5
<b>Saddles - Flared Top</b>													
RF94		27.5	5.0	9.0	6.0	-	3	1 3/32	3/16	11/32	1/4	-	0.1
RF94A		29.0	5.0	6.0	5.0	-	3	1 1/8	3/16	1/4	3/16	-	0.1
RF148		41.0	6.0	12.0	15.0	-	8	1 5/8	1/4	15/32	9/32	-	0.3
RF291		32.0	5.0	9.0	13.0	-	7	1 1/4	3/16	11/32	1/2	-	0.2
RF5013		38.0	5.0	12.5	15.0	-	8	1 1/2	3/16	1/2	19/32	-	0.3
RF5023		51.0	6.0	14.0	18.0	-	11	2	1/4	9/16	3/4	-	0.4
<b>Saddles - Ferrule Eye</b>													
RF499		8.0	4.0	28.0	4.0	-	4	5/16	5/32	1 1/8	5/32	-	0.1
RF1056		16.0	8.0	60.0	8.0	-	40	5/8	5/16	2 3/8	5/16	-	1.4
RF1057		12.5	6.0	45.0	6.0	-	18	1/2	1/4	1 3/4	1/4	-	0.6
RF1058		10.0	5.0	36.0	5.0	-	9	13/32	3/16	1 7/16	3/16	-	0.3

\* Turned U-Bolt with a pad eye base. Thread size is 6.4mm (1/4" UNC). Suits maximum deck thickness of 22mm (7/8")

**FIXED**



RF2431-16  
2 x M16



RF2431-20  
2 x M20

**REMOVABLE**



RF2435-14    RF2435-20  
4 x M10    6 x M12

**FIXED, NON-TUMBLE**



RF2434-16B  
2 x M14

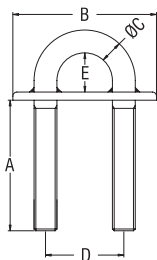


RF2434-20B  
2 x M18

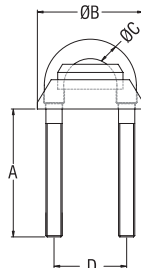
**REMOVABLE, NON-TUMBLE**



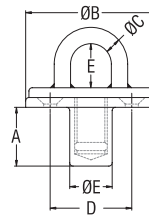
RF2435-16B    RF2435-20B  
4 x M10    6 x M12



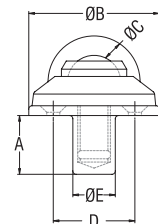
**FIXED**



**FIXED, NON-TUMBLE**



**REMOVABLE**



**REMOVABLE, NON-TUMBLE**

- ✓ Fixed style padeyes feature an all-in-one U-bolt mount for maximum strength.
- ✓ Screw in, removable padeyes allow the block and padeye to be easily removed when not in use.
- ✓ Included dust cover on removable padeyes prevents grit from entering the threaded socket when the padeye is removed.

PRODUCT No.	DESCRIPTION	A	B	C	D	E	M.W.L.	B.L.	WEIGHT	A	B	C	D	E	M.W.L.	B.L.	WEIGHT
		mm	mm	mm	mm	mm	kg	kg	g	in.	in.	in.	in.	in.	lb	lb	oz
RF2431-16*	Padeye, fixed	80	97 x 40	16.0	57.0	31	10000	20000	600	3 5/32	3 13/16 x 1 9/16	5/8	2 1/4	1 7/32	22050	44090	21.2
RF2431-20*	Padeye, fixed	80	125 x 50	20.0	75.0	35	16000	32000	1000	3 5/32	4 15/16 x 1 31/32	13/16	2 31/32	1 3/8	35270	70550	35.2
RF2434-16B*	Padeye, fixed non-tumble	83	80	16.0	56.5	-	8000	16000	1000	3 9/32	3 5/32	5/8	2 7/32	-	17640	35270	35.2
RF2434-20B*	Padeye, fixed non-tumble	98	110	19.8	74.5	-	13500	27000	2400	3 7/8	4 5/16	25/32	2 15/16	-	29760	59520	84.6
RF2435-14	Padeye, removable	40	100 x 29	14.0	70.0	32	7500	15000	1100	1 9/16	3 15/16 x 1 5/32	9/16	2 3/4	1 1/4	16530	33070	38.8
RF2435-20	Padeye, removable	52	135 x 35	20.0	100.0	42	13500	27000	2700	2 1/16	5 5/16 x 1 3/8	25/32	3 15/16	1 21/32	29760	59520	95.2
RF2435-16B	Padeye, removable non-tumble	40	100	16.0	70.0	32	8000	16000	2200	1 9/16	3 15/16	5/8	2 3/4	1 1/4	17640	35270	77.6
RF2435-20B	Padeye, removable non-tumble	52	135	19.8	74.5	42	13500	27000	3700	2 1/16	5 5/16	25/32	2 15/16	1 21/32	29760	59520	130.4

\* Nuts and washers included with fixed padeyes